



2017 Annual Report

Cover:

Carol Wylie, *Odalisque*, 2016, oil on canvas, 122 x 91.5 cm

Permanent Collection of the Mann Art Gallery

## **Vision**

The Mann Art Gallery is the catalyst that bridges culture and community through vitality in the visual arts.

## **Mission**

The Mann Art Gallery engages, facilitates, and stimulates the development, presentation, and preservation of the visual arts for the diverse community of Prince Albert and North Central Saskatchewan.

## **Values**

In realizing this Vision, the Mann Art Gallery is:

- defined by positive and respectful relationships – between and among its staff, volunteers, and board members as well as with its clients and stakeholders.
- professional and knowledgeable – operating with a high degree of professionalism in its artistic and business operations and its governance.
- inclusive, accessible, and welcoming – serving a diverse population and meeting a wide range of community needs and interests.
- supports and values artists, who are at the centre of its operation and its programs.

## **Board of Directors**

Trina Boran (Chairperson)  
Linda Clavelle (Secretary)  
Susan Prakash (Treasurer)  
Diane Mann  
Al Loustel  
Lynn Splawinski

Kenny Holder  
Jon Kendrick  
Christina Lorentz  
Wes Moore  
Christina Pico

## **Staff**

Jesse Campbell (BA, MA)  
Director/Curator

Lana Wilson (BA, MA)  
Gallery Educator

Emma Anderson (BFA)  
Registrar/Preparator

Randa Hopkins  
Gallery Receptionist

## **2017 Former Staff**

Jordan Bulgis  
Acting Registrar; Collections Intern

Mashhood Tahir  
Collections Assistant

Katherine Roy-Chovin  
Assistant Educator

Kayanna Wirtz  
Assistant Educator

# Table of Contents

6.....	Chairperson's Message
7.....	Director/Curator's Message
9.....	Financial Facts
10.....	Exhibitions
32.....	iMAGine Arts Education Program
49.....	Permanent Collection Acquisitions
57.....	Fundraisers
58.....	Volunteers
61.....	Members
63.....	Partnerships
64.....	Sponsors
66.....	Attendance Statistics

# Chairperson's Message

On behalf of the Board of Directors I would like to thank the artists of Prince Albert and surrounding communities for your talents, your abilities, your passion and your time. We are honored to be able to provide you with a space to display, and sell your work.

Thank-you to Mayor Greg Dionne, City Councillors, and City Staff for your continued support of the arts in Prince Albert. Art makes culture, and culture is part of the backbone of our city.

Thank-you to our volunteers for your unending support and time. It is so great to volunteer alongside you at events such as Wolf Back a Beer!

To the staff of the Mann Art Gallery: where shall I begin! Your time, commitment, professionalism, creativity, and work are very much appreciated. From providing education to organizing receptions and workshops – you facilitate opportunities for inspiration and expression. You are the wheels that make the gallery turn.

To the Board of Directors past and present: I am very honored to sit on a board with such a great group of people. Thank-you very much for your time, energy, and knowledge.

To paint a picture a person needs: brushes, paint, canvas or some other medium. You need time, space, imagination, and creativity. You need persistence, passion, and maybe a couple glasses of wine. To be a gallery you need artists, community support, volunteers, staff, and a Board of Directors. I would say that we are painting a beautiful picture of our own.

Sincerely,

Trina Boran

Chairperson – Mann Art Gallery Board of Directors

# Director/Curator's Message

The Mann Art Gallery (MAG) continues to be a place where the diverse communities of Prince Albert and North Central Saskatchewan come to learn, create, glean inspiration, and be challenged. 2017 was another busy year as we worked to deepen our relevance as the only professionally-run public art gallery in Prince Albert. It is my pleasure to outline in this Annual Report how the MAG has spent another 365 days enacting its Mission to engage, facilitate, and stimulate the development, presentation, and preservation of the visual arts.

Gallery operations, and therefore the MAG's Mission, are undertaken with great responsibility by staff Emma Anderson (Registrar/Preparator), Lana Wilson (Gallery Educator), and Randa Hopkins (Gallery Receptionist). In each of their respective areas of work, they continuously champion the creation and development of artwork by local and regional artists. Emma, Lana, and Randa work diligently to ensure that the Prince Albert region is served through exhibitions, the Permanent Collection, and the iMAGine Arts Education Program. In each of their own ways, gallery staff aims to build bridges through art.

The annual slate of shows is designed to share excellent art by local artists, provide access to work by professional artists who work further afield, and to allow local emerging artists and youth the opportunities to exhibit. 2017 exhibition highlights include the always-popular 41<sup>st</sup> Annual Winter Festival Art Show & Sale (guest curated by Zachari Logan, whose deep appreciation for submitted work made for a fruitful discussion at the curatorial talk and critique); seeing the avenues explored in more than 80 artworks by local youth in the 6<sup>th</sup> Annual High School Juried Art Show; the exciting recent work (and all things tar gel) by George Glenn in the exhibition *Redefinition*; the examination of relationships between settlers and Indigenous people in Sandra Semchuk's *Love Stories: Listening and Seeing as Gestures Towards Reconciliation*, curated by the Indigenous Peoples Artist Collective (a timely show, as in February 2018 Sandra was awarded a Governor General's Award for Visual and Media Arts); and the first showing of work by McGregor Hone in *Imprint: Printmaking by Mac Hone*, curated by Permanent Collection Intern Jordan Bulgis. We were delighted to share a selection of Mac's prints in what was the first of a series of annual exhibitions featuring Hone pieces in our Permanent Collection. Unfortunately, a flood that occurred at the gallery on December 27<sup>th</sup>, 2017 meant that the Hone prints, as well as mezzotints by Patrick Bulas, had to be taken off the walls earlier than expected. No artwork was damaged despite the gallery undergoing surprise renovations after a sprinkler head burst in the cold weather.

In 2017 the MAG also continued its partnership with the Prince Albert Arts Council to program exhibitions at the John V. Hicks Gallery, located at the Arts Centre. As the MAG operated in that space in its early days, we are pleased to work with the Arts Council to keep this heritage site active and relevant to the local community. Many thanks to the Arts Council for their enthusiasm and energy in maintaining the Hicks Gallery.

The MAG's Permanent Collection continues to grow thanks to unique support from Diane & Roger Mann. In addition to making important purchases by local artists, we received significant donations of art. For example, the MAG's holdings of work by Aganetha Dyck were augmented by seven donated pieces that are representative of her early career in Prince Albert. Carin van Walsem also generously donated *Inside Out*, created in 1977 by her mother, Margreet van Walsem. We were pleased to display this woven tapestry in November and December. As one can imagine, a growing artwork collection results in limited

storage space. Therefore in summer 2018 we will be undertaking a large behind-the-scenes project to reorganize the vault and create additional capacity for our valued Permanent Collection.

In the iMAGine Arts Education program, Lana Wilson designs and carries out art tours and activities based on the art in exhibitions and in the Permanent Collection. She undertakes her work with great passion, knowledge, and respect as she builds bridges with people of all ages, backgrounds and abilities. Lana's report on page 32 details the numerous user groups in Prince Albert and northern Saskatchewan who have benefitted from visual arts education. Of note, in 2017 Lana procured funding from Young Canada Works to hire the first ever Indigenous Education Gallery intern. We were thrilled to welcome Ashley Peterson in this position in October 2017, and the MAG is privileged to benefit from her knowledge until the end of March 2018.

iMAGine Arts Education programs are enhanced by partnering with groups in Prince Albert such as the Indigenous Peoples Artist Collective, Prince Albert Grand Council, Historical Society, John M. Cuelenaere Library, Arts Centre, Multicultural Council, the Arts Council, and more. In 2017 we were thrilled to form what we intend to be a longstanding partnership with the newly-formed Spark Theatre. In May 2017, *Vagina Monologues* was shown in the MAG space in conjunction with Heather Benning's exhibition *A Prairie Gothic*. Nearly all five performances were sold out, resulting in almost 1000 visitors at the gallery in a span of less than one week. We look forward to more partnerships with Spark Theatre, such as the upcoming *Marg Szkaluba*, showing at the MAG from May 3<sup>rd</sup> – 5<sup>th</sup>, 2018.

The MAG is able to conduct its activities and open its doors free of charge thanks to the support of numerous funding agencies. The long-term commitment of Diane & Roger Mann of Mann Motor Products is a unique example of cultural stewardship that supports both an organization and local artists. The Manns' contribution solidifies accessibility to the fine arts for everyone in our community, and in turn ensures that the arts are part of a healthy, well-rounded city. Likewise, the City of Prince Albert's support remains crucial for the MAG to carry out its operations and build bridges through art. The City's annual operating grant, building maintenance, and support of programs grows stronger each year. Additionally, we gratefully acknowledge the operational and project support provided by the Saskatchewan Arts Board, the Canada Council for the Arts, and numerous other organizations.

Finally, many individuals dedicate their energy to volunteering at the MAG. We are indebted to the 68 people who enthusiastically volunteered a total of 897.5 hours! I would also like to specially thank the Board of Directors, who commit their time, expertise, and resources to ensuring that the MAG is properly governed. Many thanks for your significant contributions to the fine arts in Prince Albert.

We look forward to welcoming you to the gallery in 2018 and thank you for all of your support.

Respectfully submitted,

A handwritten signature in dark ink, appearing to read 'Jesse Campbell', written in a cursive style.

Jesse Campbell  
Director/Curator



# Financial Facts

## Annual Grants

**\$68,375.00** from the Saskatchewan Arts Board's Multi-year Operating Grant for Professional Arts Organizations, 2014-17

**\$28,000.00** from the Canada Council for the Arts' Multi-year Operating Grant for Public Art Galleries, 2014-17

**\$75,000.00** from the City of Prince Albert's Annual Operating Grant

**\$30,000.00** for Operating Expenses; **\$20,000.00** for the Permanent Collection acquisitions fund, from Diane and Roger Mann of Mann Motor Products, 2010-19

## Project Grants

**\$7,000.00** from the Community Grant Program for iMAGine Arts Education, April 2016 to March 2017

**\$30,000.00** from the Community Initiatives Fund for iMAGine Arts Education annual and summer programs, including a 2016 payment and for the April 2017 to March 2018 grant period

**\$1,350.00** from the PA & Area Community Foundation Grant for iMAGine Arts Education Long-term Care Outreach Education program

**\$13,500.00** from Young Canada Works (Building Careers in Heritage) for internship positions of Permanent Collection Assistant and Indigenous Education Gallery Intern

**\$11,491.00** from Young Canada Works (Canadian Museum Association) to help offset the costs of one Collections Assistant and two Assistant Educator summer students

**\$3,000.00** from SaskSport – Student Summer Works for summer student positions

**\$10,131.00** from Service Canada – Canada Summer Jobs for the summer student positions

**\$1,921.00** from SaskCulture– Aboriginal Arts & Culture Leadership Grant for the final payment of the 2016 Northern Indigenous Media Arts Project

**\$5,000.00** from Canada Council for the Arts – New Chapter Grant for an art commission in 2018 under the province-wide project titled *Roadside Attractions*

**\$426.00** from Canada Council for the Arts and Sun Life financial for gallery tour programs with Syrian refugees and newcomers in Prince Albert

# Exhibitions

## Paula Cooley: *MIX*

November 14<sup>th</sup>, 2016 – January 14<sup>th</sup>, 2017

Curated by Jesse Campbell



Paula Cooley, *Lucent* (detail), 2014, porcelain and steel, 205 x 95 x 14 m

Paula Cooley's practice is inspired by the natural world. Her work suggests the dynamic vitality of plants, water, wind, and earth, but does not serve as literal representations. Instead, her sculptures look as if they are mutating organisms or evolving formations, the curious and unusual products of natural selection. Having an interest in Surrealism and Modernist sculpture (particularly the work of Hans Arp, Louis Bourgeois, and Barbara Hepworth), she strives to make work that is sensuous, elegant, and controlled yet tinged with the grotesque. In *Mix*, these dualities of beauty vs. grotesque, attraction vs. menace, and organic vs. industrial lead her to create ambiguous forms that are animated, whimsical, and otherworldly.

# Then & Now: Selections from the Permanent Collection

November 14<sup>th</sup>, 2016 – January 14<sup>th</sup>, 2017

Curated by Jesse Campbell



Installation shot from *Then & Now: Selections from the Permanent Collection*

*Then & Now* shows connections between artworks that have come into the MAG's Permanent Collection over the past sixteen years. This exhibition traces links amongst local and regional artists, subjects, and styles that make up the Collection in its current state. Some connections show clear parallels across a range of ages, with younger artists being influenced by the aesthetics of those from generations prior. In other cases, the links demonstrate multiple artists' different points of view on the same topics. The development of personal practices will also be evident thanks to acquisitions of individual artists' early and more recent pieces.

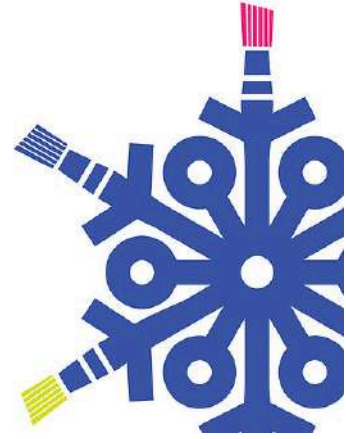
This exhibition provides a lens to examine artists' perspectives while also acting as record of collecting within an art institution. It is evident that local Prince Albert artistic trends and sites of active art making are well represented, especially in regards to the Emma Lake workshops. The exhibition also highlights gaps that have yet to be filled within the Permanent Collection. Noticeable in this exhibition is a lack of Indigenous artwork, for example. This is currently a collecting priority, and as it is filled, will make the Collection even more reflective of and inspiring to the local community. As the Mann Art Gallery continues to develop its strong Permanent Collection, it will be a key indicator of how the visual art community is energetic and growing, both *Then & Now*.



MANN ART GALLERY 41ST ANNUAL

# Winter Festival

JURIED ART SHOW & SALE



**February 10<sup>th</sup> – March 25<sup>th</sup>, 2017**

The Annual Winter Festival Juried Art Show & Sale is the premier art event of Northern Saskatchewan, showing hundreds of artworks created by emerging and professional artists from across the province. In the past 41 years the show has grown to reflect an incredible level of artistic production in the visual arts and strong community support through local sponsorships and awards. Thank you to the artists, arts organizations, guilds, and businesses who continually support this community exhibition.

## **2017 Guest Curator: Zachari Logan**



Zachari Logan in the process of curating the 41<sup>st</sup> Annual Winter Festival Exhibition

Zachari Logan's work has been exhibited widely, in group and solo exhibitions throughout North America and Europe, including: Athens, Amsterdam, Atlanta, Barcelona, Berlin, Brussels, Cincinnati, Chicago, Calgary, Edmonton, Grenoble, London, Los Angeles, Miami, Montreal, New York, Ottawa, Regina, Paris, Seattle, Tampa, Toronto, Winnipeg, Verona, and Vienna, and is in public and private collections worldwide. Logan has attended residencies in Paris in conjunction with Galerie Jean Roch Dard, in rural Tennessee at Sassafra ARC/Liberty, in Calgary through ACAD's Visiting Artist Program, in Vienna several times through both the Museum Quartier's quartier21: Artist in Residence Program and project space Schliefmuhlgasse 12-14, and in London at Angus-Hughes Gallery. In the spring of 2015 Logan attended the International Studio and Curatorial Program, and returned to NYC during the winter of 2016 as artist in residence at Wave Hill Botanical Gardens in the Bronx.

# 2017 Winter Festival Juried Art Show & Sale Awards

## **Dana Wareing Popescul Memorial Award for Mixed Media**

Donated by: Popescul family in memory of Dana Popescul  
Anita Rocamora, *Bonsai*

## **The Kyla Memorial Award**

Sponsored by: the Kyla Art Group in honour of Linda Erhardt, Rose Mineau, Merv Melby, Audrey Boyce, Dave Sims Sr., Elsie Hoffman, Frank Sudol, Ray Burdeyny, & Francis Hanson.  
Hilary Johnstone, *Island on Fire*

## **Peggy & Sandy Kerr Memorial Award**

Donated by: the late Peggy and Sandy Kerr  
James Clow, *Silver Buffalo*

## **Lorraine Mathiason Memorial Pottery Award**

Sponsored by: the Prince Albert Arts Council  
Tom Gertz, *Alligator Crawl*

## **John & Marjorie Hicks Memorial Award**

Donated by: the late John and Marjorie Hicks  
Michel Boutin, *Old Boy*

## **Fibre Art Award**

Sponsored by: the Prince Albert Spinners & Weavers Guild  
June Jacobs, *Seasonal Connect*

## **Photography Award**

Sponsored by: the Northern Image Photographers  
Ron Cooley, *Downtown Mosaic*

## **Men Who Paint Award**

Sponsored by: the Men Who Paint group  
Judy McNaughton, *Self-Portrait with Egg Shell*

## **Guy Rutter Memorial People's Choice Award**

Sponsored by: the Peggy & Sandy Kerr  
Greg Hargarten, *Morning Glory*

## **Mann Art Gallery Permanent Collection Purchases**

Acquired thanks to support from Diane & Roger Mann  
Kylee Blackburn, *Northern Negativity*  
Pat Bliss, *Tower Duty*  
Michel Boutin, *Old Boy*  
Earl McKay, *Memories of Days Gone By*  
Karen Pask-Thompson, *Dismissed*  
Carol Wylie, *Odalisque*

## **Needlework Award**

Sponsored by: the Sharp Needles Embroidery Guild  
Kylee Blackburn, *Northern Negativity*

## **Lapidary Award**

Sponsored by: the Mid-Pro Rock & Gem Society  
Andrea Guillet, *Chrysocola Pendant*

## **Frank Sudol Memorial Award**

Sponsored by: the Prince Albert Wood Turners Guild  
Marcel St. Amand, *Jem*

## **Hues Art Supply Store Award**

Sponsored by: Hues Art Supply Store  
Shirley McMahon, *Dance of Honour*

## **The Art Placement Media Award for Watercolour**

Sponsored by: The Gallery/art placement Inc.  
June Ricklefs, *Twists and Turns*

## **The Art Placement Media Award for Acrylic**

Sponsored by: The Gallery/art placement Inc.  
Kim Morrall, *Le Jardin du Monet*

## **The Art Placement Media Award for Oil**

Sponsored by: The Gallery/art placement Inc.  
Rhonda Rasmussen, *Brisk Stroll*

## **The Art Placement Media Award for Drawing**

Sponsored by: The Gallery/art placement Inc.  
Jerome Mrazek, *The House Across the Street*

## **2017 iMAGine Arts Education Prize**

Sponsored by: The Mann Art Gallery  
Heather Adamson

## **Third Place Prize**

Sponsored by: the Prince Albert Arts Board  
Pat Bliss, *Tower Duty*

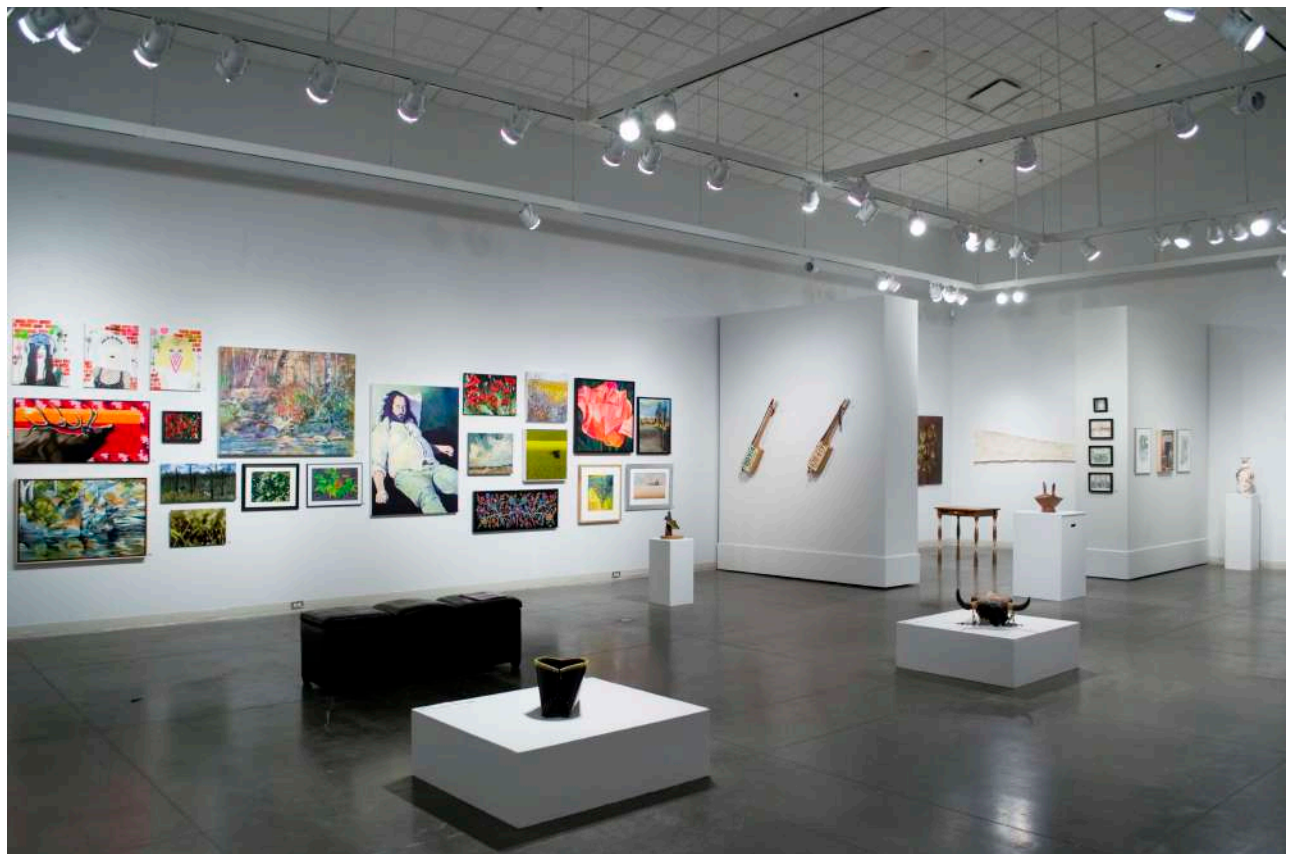
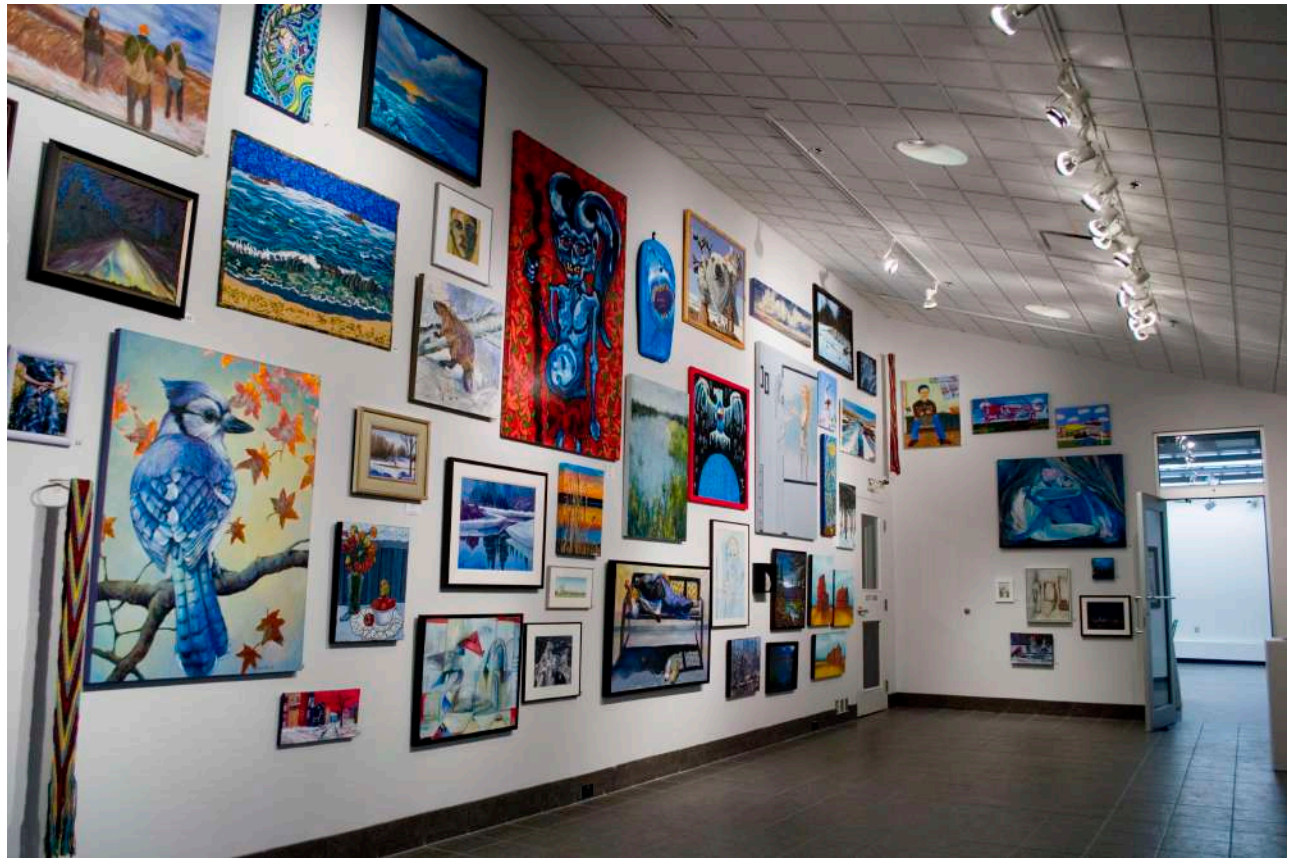
## **Second Place**

Sponsored by: the Prince Albert Arts Council  
Kylee Blackburn, *Northern Negativity*

## **Mayor's Prize & Best of Show**

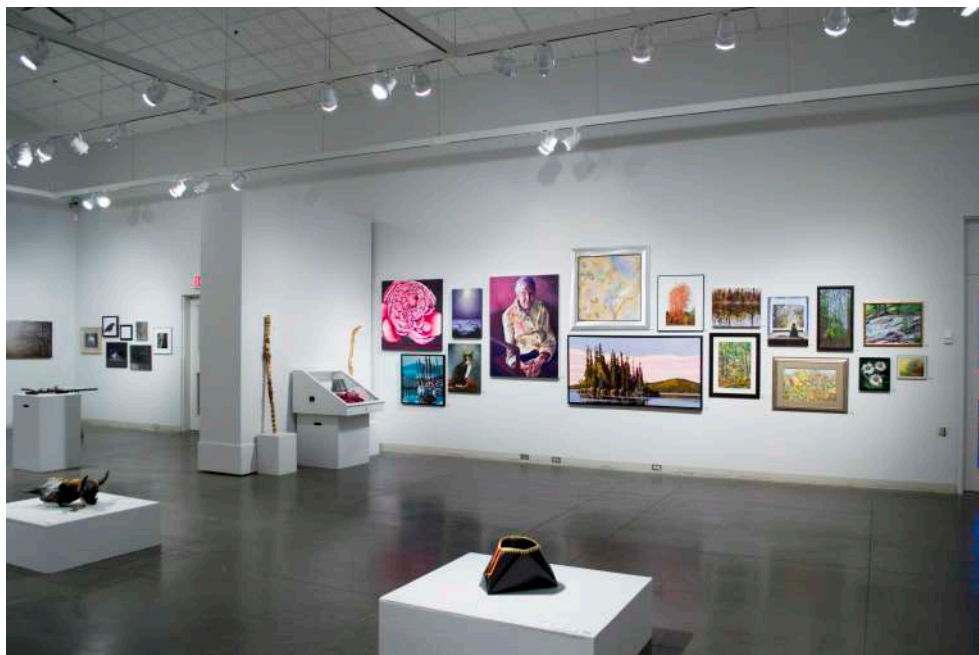
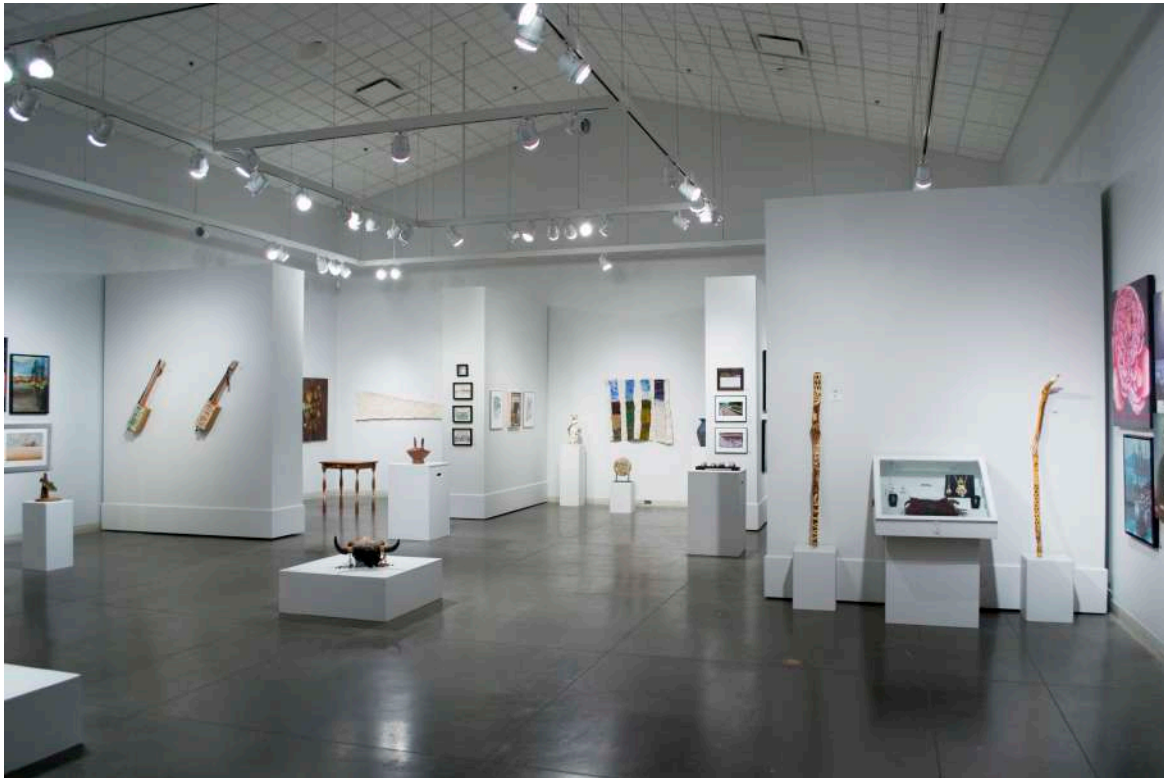
Mel Bolen art piece donated by the City of Prince Albert  
and a cash prize donated by the Darrell Bell Gallery  
Carol Wylie, *Odalisque*

## Winter Festival Juried Art Show & Sale Installation Views





## Winter Festival Juried Art Show & Sale Installation Views



# Heather Benning

## *A Prairie Gothic: Let Our Fields Be Broader, But Our Nights So Much Darker*

March 31<sup>st</sup> – May 13<sup>th</sup>, 2017

Curated by Jennifer McRorie, Moose Jaw Museum & Art Gallery



Heather Benning, detail from *Work Hard, Be Nice*, 2014, plastic, enamel, wood, and oil paint

Saskatchewan artist Heather Benning has a growing international reputation for producing large-scale, site-specific installations within natural environments, presenting interventions in outdoor locations and abandoned and decaying architectural spaces. Another focus of her practice is creating gallery-based installations and, most recently, working in video. It is these latter practices that are featured in the exhibition, offering viewers intricately woven narratives that address notions of place, loss, the perceived 'otherness' of rural life and the construction of gender and femininity.

Benning presents viewers with iconic images and monuments of prairie rural life that not only acknowledge the passing of an era, the loss of a connection to our rural roots, idyllic dreams that are never realized and the inevitability of change, but also reflect a sensitivity and respect for the individual lives and stories, whether real or imagined, that collectively contribute towards a prairie sensibility or mythology.



# 6<sup>th</sup> Annual High School Juried Art Show

April 6<sup>th</sup> – May 13<sup>th</sup>, 2017

Curated by Lana Wilson (Gallery Educator)



Local high school student, *The Other Side*, 2017, acrylic on paper. Recipient of the Juror's Choice Award.

The Mann Art Gallery's 6th Annual High School Juried Art Show celebrated the artistic achievements of Prince Albert and area high school students in both the public and Catholic school systems. Our annual exhibition allows students and art instructors to share the fruits of their creative labours with our community in a professional gallery space. Thanks to the Prince Albert Council for the Arts, On the Avenue Artisans' Gallery, Kyla Art Group, Cheryl Ring, and the John V. Hicks Memorial Fund for sponsoring awards for our outstanding student artists.

# George Glenn: *Redefinition*

May 26<sup>th</sup> – August 19<sup>th</sup>, 2017

Curated by Jesse Campbell



George Glenn, *Studio, Late Winter*, 2017, acrylic on canvas, 60 x 40"

To encounter an artwork by George Glenn is to experience the exciting possibilities of painting. In capturing the spirit of a place, an object, or a mood, George continuously is pushing boundaries in a redefinition of what painting can do and how materials work together. This manifests in many ways in his work, from small collages of found objects to large canvasses that describe the poetics of interior and exterior spaces. Ultimately, these creations describe who George is now and what has brought him to this point in his life. Each piece – whether landscape, interior, or still life - is constructed from daily experience and is imbued with memory.

For decades George has been well regarded as a still life painter and one of the finest art educators in Saskatchewan. Raised in Regina and educated at the University of Manitoba (BFA Hons, 1970) and University of Cincinnati (MFA, 1974) George moved to Prince Albert in 1975, initially on a temporary basis as artist-in-residence. He primarily painted unassuming objects with his perspective on beauty, that he defines as “stillness brought to life.” But following his retirement in 2013, George’s energy and invention in painting have a new charge. Some say that his practice is growing “weirder and weirder.” This newfound liberty in art is displayed in *Redefinition*, with his latest works that resist classification of both genre and media. In addition to showing a redefinition of George’s artistic approach, it also illustrates a new chapter in his career that has been shaped by time, media, and place.



# Paige Mortensen: *Portals*

May 26<sup>th</sup> – July 8<sup>th</sup>, 2017

Curated by Jesse Campbell



Paige Mortensen, selections from *Stories Inside*, 2014 - 2016, watercolour batik on canvas,

Paige Mortensen is a Saskatoon-based artist who works in watercolour batik. Batik is an ancient art form originally created with wax and dyes on fabric. The watercolour batik process still uses wax as a resist, but Mortensen works on Ginwashi paper and uses watercolours as the pigment. The finished pieces contain soft colours and rich texture that invite viewers to look deeper into both the content and the material – an appropriate appearance for Mortensen's subject matter that centers on ideas of intrigue and wonder.

The imagery in *Portals* was inspired by Mortensen's visits to Europe, where she was fascinated by doors and windows in numerous locations. Not only did the historic architectural styles encourage deeper looking, but she wondered about the stories that each of these openings held. Who lived behind the doors? What were their lives like? In each piece that Mortensen creates, the depicted portals provide a gateway to imagine and question what and who is on the other side. Although Mortensen's content is derived from distant locations, she encourages deeper looking into more familiar surroundings. However, in these pieces Mortensen has adjusted the perspective so that viewers look at the outdoors from inside, rather than being in the opposite position. This reversal of roles applied to Saskatchewan scenes encourages a more introspective look at our lives, the places we live, and those who may be on the other sides of walls that support our doors and windows. This is especially true in light of Canada's 150<sup>th</sup> anniversary, as 2017 triggers critique at our country's crude history and reminds us of doors that have remained closed to many people. Indeed, the reality on one side of a portal can be much different than the other.

# Leah Dorion: Two Metis Vests

May – June 2017

Curated by Lana Wilson (Gallery Educator)



Installation view, *Two Metis Vests*, summer 2017

*Two Metis Vests* is the title of one of five early readers' books written and illustrated by Prince Albert artist, educator, and author Leah Marie Dorion. In June 2015, Dorion generously donated to the Mann Art Gallery the 47 paintings that accompany her books. The Mann Art Gallery is committed to regularly displaying these works in the Education Studio Gallery to inspire and educate visitors with Dorion's glowing colours, bold compositions, and rich Métis cultural themes.

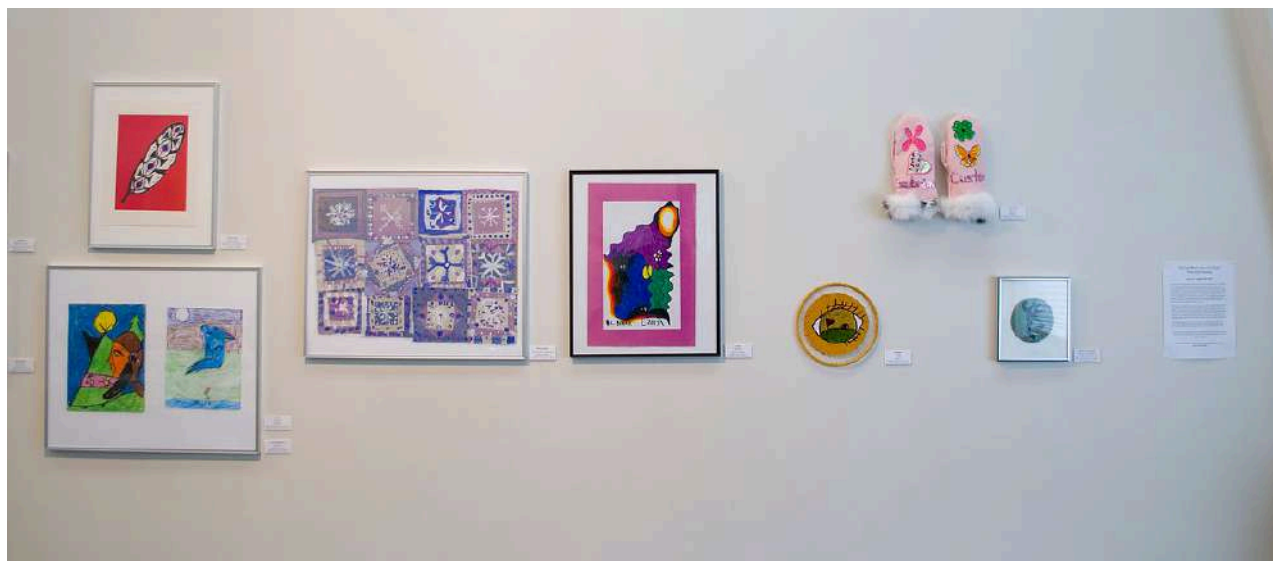
As in all of her book illustrations, Leah's love of teaching, especially teaching young children, shines through. Her pride in her subject matter - Métis heritage - and in this particular series, traditional Métis garments, is evident in her careful selection and arrangement of details and concepts.

Page by page, the two vests, both beloved and traditional to Métis culture, are compared for similarities and differences, while key words for the early readers are repeated. Leah shows us, through simple yet vibrant, bold images, how traditional First Nations' natural materials and technology - tanned deer hide, sinew thread and bone awl, bone fastenings, porcupine quillwork, leather fringe - and European trade goods - velvet cloth, glass beads, metal needles, and ribbon - are both used by Métis women to create beautiful and functional garments. The simple yet detailed illustrations of steps and materials suggest that we, too, with the right materials, tools, and a knowledgeable teacher, can partake in this beautiful tradition.

Leah's generous gift of *A Métis New Year*, *Two Métis Vests*, *A Red River Cart*, *Giving Thanks*, and *Ways to Carry a Métis Baby* series will be celebrated by generations of Prince Albert citizens. The books are published by Strong Nations Publishing Inc ([www.strongnations.com](http://www.strongnations.com)).

# Prince Albert Grand Council: Fine Arts Festival Display

June 12<sup>th</sup> – August 25<sup>th</sup>, 2017



Installation shot from the Prince Albert Grand Council Fine Arts Festival, June 2017

In April 2017, the Prince Albert Grand Council (PAGC) celebrated the 26<sup>th</sup> Annual Fine Arts Festival. This weeklong event showcases visual art, drama, dance, music, and literature by First Nations' students at PAGC schools in central- and north-Saskatchewan. The Fine Arts Festival originated in the early 1990s, when there was a lack of opportunities to show the creative work and talents of students outside of Saskatchewan's major centers. The festival has increased from a few hundred participants in its early years to more than 1,700 students in 2017. It is an incredible display of artistic ability and growth that brings together people from multiple generations and geographic locations to share, celebrate, and nurture the hard work of First Nations' youth.

The Mann Art Gallery is pleased to have on display a selection of outstanding artworks, including many artworks that received awards from local professional jurors, from the Festival. The eighteen artworks were created by elementary students in Divisions 1 & 2. These young students show us that inspiration comes from many perspectives: modern pop culture, local heritage, animal symbology, love of family, and cultural traditions. Teachers are inspiring their students to work with a wide range of artistic media, from traditional materials like beads, fur, leather, antlers, and felt, to contemporary digital art and graphic design. The diversity amongst this group of works gives an indication of how youth in First Nations communities are directing their creative energies, while demonstrating that visual art is a valuable form of expression to share our own experiences and views.

This exhibition is possible thanks to the Prince Albert Grand Council, Shona Stapleton, art instructors at participating schools, and the young artists whose work is on display.



# Bonnie Gilmour & Charley Farrero: *Le Look*

July 13<sup>th</sup> – September 5<sup>th</sup>, 2017

Curated by Jesse Campbell



Bonnie Gilmour & Charley Farrero, *Morley Morille, Bobo, and Mini Marmousette*, 2015, ceramic, 8 x 8"

In Spring 2015, Saskatchewan ceramic artists Bonnie Gilmour and Charley Farrero were invited to participate in a ceramics residency at St. Quentin la Poterie, a small medieval pottery village in southern France. The work that was produced during this residency exhibited in France, and will now be shown in *Le Look* at the Mann Art Gallery.

*Le Look* consists of 14 ceramic face jars with hats. The face jars were created by Gilmour, while Farrero fashioned the ceramic hats, or lids. These jars are the artists' contemporary interpretation of the folk tradition of "ugly" face jugs that originated in southern USA. The folk tale is one of warning and judgment. Many years ago, it is said that moonshine was placed into pottery jugs, but children had a habit of getting into the drink. Potters therefore put ugly faces on the jugs to scare away the children. Later, the jugs were also placed at grave sites to scare evil spirits. Pottery with faces has a long tradition and appears in many cultures. Today, face jugs are prized by collectors around the world for their comical facial expressions.

# Northern Image Photographers Annual Exhibition: *Beyond the Comfort Zone*

September 13<sup>th</sup> – October 27<sup>th</sup>, 2017

Curated by Jesse Campbell



Lorna Blakeney, *Spectacle*, 2017, digitally-altered photograph

Founded on the principle of excellence in photography, the Northern Image Photographers is a club composed of local people of all ages who share an interest in improving their photography, both technically and conceptually. The work of the Northern Image Photographers is celebrated in an annual exhibition hosted by the Mann Art Gallery. Each year the Director/Curator of the Mann Art Gallery sets a theme for the photographers to explore. In 2017, the club members created work that went beyond their comfort zones. An important exercise for all artists, this approach resulted in members photographing different subjects and editing photos with other techniques than they are usually accustomed to. The comfort zone varies widely from person to person, whether as a viewer of art or as the photographers themselves. Ultimately, stretching beyond the norm opens the mind and eye to greater understanding of a subject, of others' viewpoints, and it can create new possibilities of expression of which an artist may otherwise be unaware.

# ***Love Stories: Listening and Seeing as Gestures Towards Reconciliation***

## **An exhibition by Sandra Semchuk**

September 8<sup>th</sup> – October 27<sup>th</sup>, 2017

Curated by the Indigenous Peoples Artist Collective



Sandra Semchuk, *The Audience, Waiting for the Poundmaker Cree to tell the Story of the Attempt to Massacre them at Cut Knife Hill in 1885*, 2010 - 12, lightjet photograph, 14 x 70"

The Indigenous Peoples Artist Collective (IPAC) is an Aboriginal artist collective based out of Prince Albert, SK. IPAC's mandate is to disseminate, create, and promote contemporary Aboriginal and urban artistic practices for the benefit of regional artists and audiences. The work that IPAC undertakes helps to lessen the alienation that can exist between Indigenous communities and the contemporary arts world. IPAC is dedicated to revealing various cultural perspectives within the region and promote inclusiveness, diversity, and cooperation, while challenging the status quo and maintaining a high level of artistic integrity.

IPAC and the Mann Art Gallery partner on numerous events. IPAC's Annual Two Story Café, that takes place every fall, includes an exhibition at the Mann Art Gallery curated by IPAC. The show features work by a past or present member of IPAC. In 2017, IPAC and the MAG are pleased to present an exhibition by Sandra Semchuk, who completed a residency with IPAC in 2010. Sandra is no stranger to northern Saskatchewan. Born and raised in Meadow Lake, she received her BFA from the University of Saskatchewan in 1970. Sandra was a founding member of Saskatoon's Photography Gallery later to become Paved Arts New Media Artist Run Centre, an amalgamation of The Photographers Gallery and Video Vérité.

Sandra is a storyteller, photographer and video artist who often works collaboratively using the familial, autobiography, and dialogue across generations, cultures and species. She worked with her late husband, James Nicholas, Cree actor and orator, to consider potential conciliations within the self and between the indigenous and non-indigenous. Their dialogue was grounded in experience in the primary knowledges of place land, flora and fauna and weather and in human stories. The more-than-human was always the larger context. In addition to her art practice, Sandra teaches at Emily Carr University in Vancouver, BC.



# Imprint: Printmaking by Mac Hone

November 17<sup>th</sup>, 2017 – January 13<sup>th</sup>, 2018

Curated by Jordan Bulgis, Collections Intern thanks to funding from  
Young Canada Works – Building Careers in Heritage



McGregor Hone, *Joyful Field*, relief print, n.d., 4 x 6"

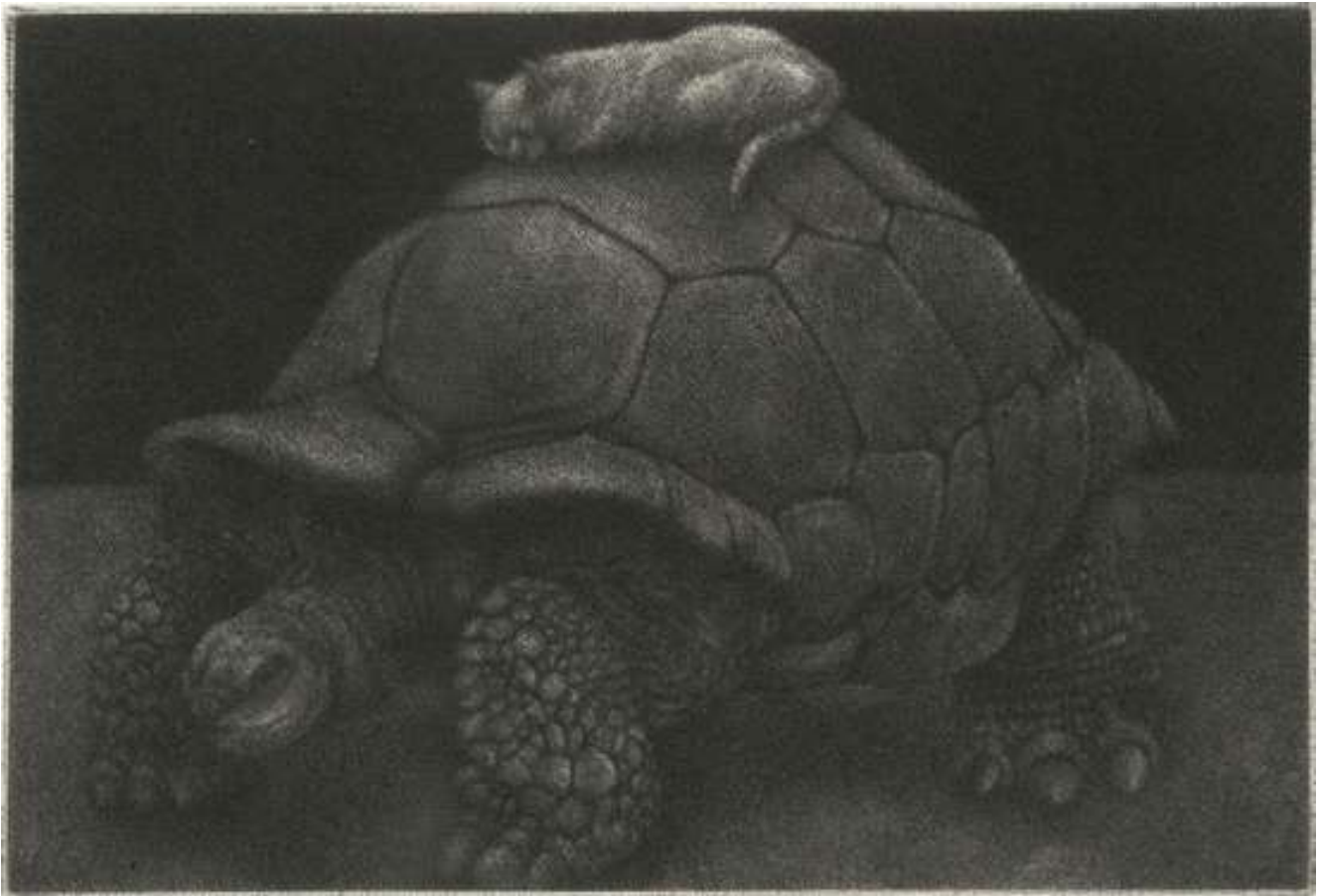
The Mann Art Gallery is pleased to present a selection of recent acquisitions by McGregor Hone. *Imprint* shows the spectrum of the techniques, subjects, and stylistic elements found in his original prints. Though he was interested in a variety of media, Mac began printing early in his career and it remained a major component of his practice. It is perhaps the work for which he is best remembered. Mac Hone was born in Prince Albert in 1920. He received a Bachelor of Arts and a Certificate in Education from the University of Saskatchewan, and frequently attended the Artist Workshops at Emma Lake. Mac had an immense impact as both an artist and educator: his painting *By The Radio* was the first piece to be acquired by the Saskatchewan Arts Board for their Permanent Collection, and he was instrumental in the development of the fine arts program at Central Collegiate in Regina.

This exhibition is possible thanks to a generous donation to the Mann Art Gallery from the families of David Hone and Jim Hall. In March 2015, they gifted a collection of artwork spanning the careers of McGregor and Beth Hone. *Imprint* is the first in a series of annual exhibitions that will show the Hone body of work in this unique collection.

# Patrick Bulas: *The Cat That Slept on a Tortoise Shell*

November 17<sup>th</sup>, 2017 – January 13<sup>th</sup>, 2018

Curated by Jesse Campbell



Patrick Bulas, *Sleepwalker*, 2009, mezzotint, 29 x 33"

*The Cat That Slept on a Tortoise Shell* is a series of mezzotint prints that was inspired by Patrick Bulas' cat, Lucy, and her ability to sleep anywhere she likes. Bulas illustrated Lucy sleeping on top of a tortoise, and then decided that she would not mind sleeping on the snout of a crocodile or curling up around the horn of a rhinoceros. These imagined encounters between Lucy and other animals is an extension of the events in Bulas' life at the time he created the prints. Pet owners frequently identify themselves with their cats, dogs, and other animals. Pets populate folktales, fables, and myths so frequently that their anthropomorphic behavior can provide both entertainment and education. While none of the work in this series is linked to specific tales, they suggest stories that are left up to viewers to invent – and sometimes provide us with those valuable life lessons that only a cat can demonstrate.

A lighthearted approach, *The Cat That Slept on a Tortoise Shell* encourages us to imagine the ideal world where Lucy coexists with many people.



## John V. Hicks Gallery

In late 2014, the Mann Art Gallery began working with the Prince Albert Council for the Arts to oversee programming at the John V. Hicks Gallery located in the Prince Albert Arts Centre. The Hicks Gallery rotates a combination of work by local artists, guilds, and organizations, and shows toured by the Organization of Saskatchewan Arts Councils. Programming at the Hicks Gallery is possible thanks to support from the City of Prince Albert, Sask Culture, and Sask Lotteries. The MAG programmed the following exhibitions at the Hicks Gallery in 2017:

### **Bonnie Denny & June Ricklefs: *Northern Skies and Reflections***

February 1<sup>st</sup> – 23<sup>rd</sup>, 2017



June Ricklefs, *Spring Flood*, 2016, watercolour; Bonnie Denny, *Before the Storm*, 2016, oil on canvas

Life on the prairies depends so much on what is going on in the skies. The weather determines whether or not plans can be carried out. Outdoor activities, summer road trips, and more are dictated by what one sees when they look up. The skies are also a source of inspiration: the serenity of a sunset, the anticipation of another day that comes with the sunrise, and even the anxiety that accompanies a wild wind or the smoke-filled sky of a forest fire. In this exhibition, Bonnie Denny and June Ricklefs show work that encompasses the ever-changing allure of prairie skies and the reflections of northern waterways and landscapes. Through their paintings, they invite viewers to experience prairie vistas and the wonder of the northern wilderness.



Lorraine Beardsworth  
*Community:  
Exploration, Encounter, Connection*

April 1<sup>st</sup> – 23<sup>rd</sup>, 2017



Lorraine Beardsworth, *Water Life*, 2017, oil on canvas, 36 x 48"

Communities are more than buildings, more than economic transactions, more than people living side by side. Communities are places where people come together to fulfill themselves creatively and to do more than individuals can do alone. In the past year communities have been affected by social, political, and environmental events. This exhibition is an attempt to find a visual language to describe the events, emotions, psychological traumas, and spiritual connections of the past year. The works in the show encompass portraiture, abstraction, landscape, and figurative work in a range of materials. This variety is a reference to diversity, and aims to provoke discussion about the present state of humanity's moral crisis at a local and global level.

# Riverside Public School: Aboriginal Arts Festival

May 24<sup>th</sup> – 31<sup>st</sup>, 2017



Riverside Public School student, *Dancing Fawn*, 2017

The works shown in the *Aboriginal Arts Festival* are the culmination of a year-long project on First Nation and Metis arts at Riverside Public School. Since September 2016 students have studied how Aboriginal identity figures in the modern world. By regularly working with locals Carla Braidek and Jack Jensen, they explore ways of expressing this theme through creations in visual art, written work, dance, and clothing. In this exhibition, the students' photographs, poems, paintings, drawings, dioramas, sculpture, and clothing are showcased. Elements of traditional First Nation and Metis imagery combine with a modern perspective to demonstrate the views of today's youth on their history, culture, and heritage. At the opening reception, students spoke about their artwork and poetry to exhibition attendees.

This exhibition is possible thanks to the support of the Saskatchewan Arts Board, SaskCulture, and SaskLotteries



# John McDonald: *Tears of a Clown*

June 1<sup>st</sup> – 23<sup>rd</sup>, 2017



John McDonald, *Nightmares*, 2015, acrylic on canvas, 36 x 24"

*Tears of a Clown* chronicles John McDonald's struggle with depression in 2011. The exhibition marks his way of coping with his demons - by acknowledging them, exposing them, and showing to the world how he experiences them. Brightly coloured and vivid, in the genre of the Lowbrow school, these works are painted in a subversive style and counterintuitive to what is often perceived to be stereotypical of the subject matter. This series of paintings was completed through an Indigenous Pathways Initiative Grant from the Saskatchewan Arts Board.

John McDonald is an award-winning writer, artist, historian, musician, playwright, actor, and activist from Prince Albert. He is a sixth-generation descendant of Chief Mistawasis of the Plains Cree. McDonald's writings and artwork have been displayed in various publications and private and permanent collections, including the Canadian War Museum.

# Kim Richard Salo: *Roads & Rivers*

December 1<sup>st</sup> – 23<sup>rd</sup>, 2017



Kim Richard Salo, *Highway Near Togo in Spring*, 2014, oil on canvas, 20 x 40"

Kim Richard Salo has pursued many paths in his artistic and professional career. Having studied architecture, environmental design, art history, drawing, and theology in Manitoba and Nova Scotia, his history has informed his artwork in numerous ways since the 1970s. However, in the past decade Salo's painting has consistently incorporated imagery of roads and rivers. These motifs serve multiple purposes. Conceptually, they encourage viewers to inquire what lies beyond one's current path and beckon us with possibilities. As a painter, consistent subject matter provides ground for Salo to explore different painting approaches. In this exhibition, for example, some pieces showcase heavy impasto, while others emphasize smooth paint application to evoke serenity.

Rivers and roads serve as a metaphor in Salo's art practice. They represent a journey of development, having arrived at one point after a period of study and being open to pursue further artistic streams. Indeed, openness is a trait that Salo embraces, as evidenced by his recent mentorships and personal critiques with artists Kim Ennis and Adrian Stimson. These sessions focused largely on the pursuit of meaning within landscape. As an Anglican priest, Salo sees divinity in the "joy of exploration;" Stimson also suggested to Salo that divinity is in the land itself.

Salo also considers landscape to be a subject that allows narratives to develop. Different visual narratives are shaped in his work by composition, colour, and line. In whatever form his works may take - whether a road painted in vibrant tones to provoke intensity or a calm aerial view of a winding river - Salo wants his art to encourage viewers to engage in their own personal journeys onwards, to look beyond the surface.



# iMAGine Arts Education Program

## *Community Focus & Collaboration*

The iMAGine Arts Visual Art Education Program delivered another strong year with 3,971 participants engaging in 203 activities over 571 hours. While maintaining core programs of Gallery Tours, we continued to build on our Accessibility and Outreach programs to reach participants in a wide variety of demographic groups. We increased our partnerships with community groups this and delivered several successful collaborative projects, most notably the Canada 150(+) Mosaic Mural. Once again, we evaluated our programs and strove to connect with underserved populations to ensure the Mann Art Gallery can offer programming to people of different ages, artistic skills and interests, abilities, and meet diverse art education and community wellbeing goals. My report describes the programs, objectives, participation statistics, key highlights, and trends of the 2017 iMAGine Arts program.

Submitted by Lana Wilson, Gallery Educator



Prince Albert's Canada 150(+) Mosaic Mural, Alfred Jenkins Field House



## iMAGine Arts Visual Art Education Program Categories & Objectives

As in previous years, iMAGine Arts programming was guided by the following ten objectives, carried out through ten program categories, and occurred over twelve calendar months. Activities and objectives are continually re-evaluated for prioritization and relevancy by the Director/Curator and Gallery Educator.

iMAGine Arts Program Objectives	
1.	Provide access to the visual arts and professional artists for all interested individuals in Prince Albert and area, regardless of age, ability, mobility, and financial capacity; to allow all the opportunity to create visual art
2.	Present opportunities for everyone, from beginners to professionals, to learn about visual art techniques, materials, and ideas
3.	Communicate context and concepts behind contemporary and historical works of art to foster visual literacy
4.	Share art created by program participants with the wider community
5.	Support emerging and established local artists to reach their artistic goals and further their careers
6.	Cater programs to diverse groups to target their specific needs and ensure members feel successful in their artistic projects
7.	Offer family activities that enable parents to engage in positive, educational and entertaining projects with their children while modeling creative behaviours
8.	Nourish youth with strong interest in the visual arts to develop their skills and ideas, assist in furthering their artistic studies, and enabling them to build professional connections
9.	Help artistically-inspired individuals who are disadvantaged or at-risk find a positive focus and work towards artistic accomplishments
10.	Present an educational, creative and exciting experience to all individuals who visit the gallery and participate in our programs



Prince Albert Saskatchewan Polytechnic students show off their Canada 150(+) Mosaic Mural tiles

## **iMAGine Arts Program Categories**

### **1. Gallery Tour Program**

- In-house tours and related art-making activities for students and community groups. School tours are designed and customized to achieve Saskatchewan curriculum outcomes for elementary, high-school, and post-secondary students, and to achieve learning objectives specified by community groups (seniors, at-risk youth, individuals with disabilities, Girl Guides, etc.)
- Minimal Cost: \$2/participant; min. \$20/group for 90-minute program

### **2. School Outreach Activities**

- In-school, curriculum-based art projects that provide unique opportunities for students and professional development opportunities for teachers. Projects may take place over multiple days, allowing for in-depth exploration of the medium or development of the concept
- Cost varies by activity and mileage fees

### **3. Family Programming**

- In-house drop-in visual arts activities on designated weekends & school holidays, designed for family members of all ages to learn/practice art skills and create art
- Especially suited to low-income, young families. Often free - ex. Family Art Drop-In

### **4. Accessibility Programming**

- In-house or outreach activities designed for groups with special needs, including individuals with developmental disabilities or at-risk youth
- In 2016 these included: PA Youth Residence Art Class; Art Abilities Summer Program, each class lasting 1 - 1.5 hours . Cost: \$20 per group min. fee, or \$2/participant

### **5. Seniors' Art Outreach Program**

- Hands-on activities specially designed for elderly participants and delivered in long-term care and retirement homes
- Free for participants - funded by grants (in 2014-16 by Community Foundation Grant)

### **6. Children's Art Camps**

- Partial day camps providing educational and entertaining art-making activities for children/youth aged 6 - 12 years old. Camps run during school breaks (Feb. & Easter) and summer holidays (6 weeks)
- 2014 - 2016 cost was \$80 - \$100 per child, per camp session (5 days of 3 hours per day)

### **7. Community Events Outreach**

- Participation in community events such as street fairs, festivals, and empowerment, diversity, and multicultural celebrations through offering drop-in arts activities for families
- Especially suited to low-income, young families. Includes face painting fundraiser

### **8. Community Art Exhibitions**

- Opportunities for project participants and diverse community group members to share their artwork with the public through exhibitions and special events
- Annual High School Juried Art Show (spring) with awards and reception
- In 2014 & 2015, Northern Indigenous Media Art Project Exhibition, in partnership with Indigenous Peoples Artist Collective

### **9. Rural Outreach**

- Visual arts activities and projects that service reduced-access areas around Prince Albert including reserves and lake communities
- High percentage of First Nations, Aboriginal and Métis participants
- Cost varies by activity and mileage, may be free if sponsored

### **10. Professional Development Programming**

- Workshops and visiting artist programs for community artists striving to further their art practices and careers
- Provides employment for professional artists and educators
- Cost varies; free (ex. CARFAC workshops level 1) to ~\$150 for 3 days

## 2017 iMAGine Arts Visual Art Education Activities & Participants

Activity	Location	# of Activities	# of Participants	Hours
Gallery Tour Program	Mann Art Gallery	52	748	80.5
Professional Development Programs	Mann Art Gallery	14	170	25
In-house Public Art Programs:	Mann Art Gallery	15	257	48.5
Children's Art Classes & Camps	Mann Art Gallery	37	376	111
Outreach: School & Community Groups	Prince Albert, Birch Hills, Shellbrook	7	213	14.00
Outreach: Seniors	Outreach: Seniors Art Outreach Herb Bassett, Mont St. Joseph & Pineview Terrace, Prince Albert; Parkland Terrace in Shellbrook. NEW: Intergenerational Art	27	571	40.25
Outreach: TV & Podcasts	CTV Craft Spot with Stephanie; Artists of Ability Workshops & Panel FB Live	1	1	0.25
Outreach: Community Celebration Events + General	Canada 150 Mosaic Mural, Art in the Park, Street Fair, Canada Day, Aboriginal Day, Summer on the Square	21	1290	74.50
Total Outreach		56	2,075	129
Student & Community Exhibitions	Mann Art Gallery High School Juried Art Show, SK Artists of Ability Festival	6	152	14
Accessibility Programming	Mann Art Gallery: Art Abilities, SHARE, Youth Residence; Safe Women's Shelter: Holistic Art Outreach	23	193	33.5
<b>Grand Totals</b>		<b>203</b>	<b>3,971</b>	<b>571</b>

<b>Sub-Category Activity Totals:</b>				
Family Activities*		19	1,369	
Internships	(sub-category of Professional Development)	8	6	2,227

\*Family Activities included are In-House - Family Programs, select Outreach - Community Celebration, and Outreach - Art in the Park



Patrick Bulas demonstrates how to use a tabletop printing press during a hands-on workshop for teens & adults

### **Program Staff, Interns, and Artists**

Education programming in 2017 was delivered by the Gallery Educator, professional artists, Young Canada Works at Building Careers in Heritage Interns, and Summer Student Assistant Educators. Providing work experience in a professional art gallery environment is an important component of Visual Arts Education at the Mann Art Gallery, and enable more education programs to be delivered.



Kayanna Wirtz & Katherine Roy-Chovin beside the collaborative PA Skyline painting at KidzFest, July 2017



## Program Costs & Funding

Project-specific grants from community organizations are crucial to ensuring that the Gallery Educator position remains *full-time, year-round*, and that student interns can be hired. *The majority of iMAGine Arts programs are offered at a low cost, subsidized price to participants, to ensure that income is not a barrier to accessing visual arts education and opportunities.* This is particularly important for participants who are students, seniors, or individuals living with disabilities. Tours, Classes and Art Camps experienced the first cost increase in several years in fall 2017, rising from \$2.00/participant or \$20.00/small group for 1.5 hours of activity, including art-making materials, to **\$2.50/participant and \$25.00/small group**. Camp costs increased from \$100.00/child/week (5 days) to \$120.00/child/week. Costs are further detailed in the Program Categories chart.

*iMAGine Arts thanks the following organizations for their generous support of the iMAGine Arts Program in 2017:*

<b>iMAGine Arts Grants 2017-2018</b>	
Saskatchewan Lotteries City of Prince Albert Community Grant Program (April 2017 – March 2018)	\$5,308 for materials and fees
Community Foundation Grant (United Way & Moffatt Foundation, (Sept. 2017 - May 2018)	\$1,500 for Seniors Art materials and fees
Saskatchewan Sport Student Summer Works	\$3,000 towards Assistant Educator Summer Students
Service Canada - Canada Summer Jobs	\$6,700 for Assistant Educator Summer Students
Young Canada Works at Building Careers in Heritage (Summer Student program)	\$5,700 for Assistant Educator Summer Students
Young Canada Works at Building Careers in Heritage (Graduate Program)	\$10,000 for Indigenous Gallery Education Intern Ashley Peterson (Oct 2017 - Mar 2018)
SaskCulture Culture Days Hub Grant (Sep. 2017)	\$4,000 shared with Hub Grant Partners

## 2017 iMAGine Arts Program Highlights & Changes

The Gallery Educator and Director/Curator constantly seek ways to make the visual arts education activities diverse, relevant, and proactive in meeting the education, creative, and wellbeing needs of Prince Albert and area. Significant highlights of 2017 included:

- **The Canada 150(+) Mosaic Mural Project** - funded by the City of Prince Albert and created by the Mosaic Mural Company, Prince Albert created one of the nine murals in SK, one of the 150 total murals created across Canada between 2015 -and2017. The Mann Art Gallery and City of Prince Albert worked together to host the Mosaic Mural guest artists and assist approximately 365 PA community members in painting a 4"x4" aluminum tile with acrylic paint. Each person created their own unique design on the tile, and when put together, the Prince Albert image is revealed: the Macintosh Mall building, forests, tipis, the North Saskatchewan River, and small houses. Two full days of paintings with the artists in the EA Rawlinson Centre, preceded by 6 workshops lead by MAG, produced the approximately 365 community tiles. Now the mural is on permanent display at the Alfred Jenkins Field House. All participants thoroughly enjoyed the experience - it was a fantastic collaborative process that produced a beautiful outcome.

- **Saskatchewan Artists of Ability Festival** - the first festival of its kind in Saskatchewan, the MAG was the Prince Albert host of this festival that occurred simultaneously in P.A., Saskatoon, and Regina. Organized by Spinal Cord Injury of Saskatchewan, this three-day festival from October 19<sup>th</sup> – 21<sup>st</sup> brought visual artists, writers, poets, musicians, and dancers together to promote professional artists living and working with disabilities. Workshops, a Facebook livecast workshop and panel, and an art exhibition featuring 12 artworks by 5 artists occurred in the Education Studio of the MAG.
- **Increased community committee work** - as Gallery Educator, I sat on several committees this year to promote visual arts and art education in our community and province. I was on the Saskatchewan Association for Community Education 2017 Conference Planning Committee. The Conference brought approximately 80 delegates to Prince Albert in March 2017 to hear keynote presentations, take part in break-out workshops, and experience tours at the Mann Art Gallery. Leah Dorion, artist, writer, and educator, was one of the keynote speakers who spoke passionately about how arts and culture have shaped her life and career. I was also part of consultations and meetings for the City of Prince Albert's Municipal Cultural Action Plan (MCAP), and sat on the City's Public Art Committee Working Group.
- **Indigenous Gallery Education Intern Debut** - In 2017 we created a new internship opportunity titled the "Indigenous Gallery Education Internship." Funded by Young Canada Works - Building Careers in Heritage, this 6-month internship provided a recent post-secondary graduate, Ashley Peterson, full-time employment at the MAG. This position is designed to actively engage more Indigenous professionals in the creation and delivery of programs at the MAG, to ensure our programming is culturally relevant to our diverse community, to provide increased professional development and education opportunities for Indigenous individuals, and to better address the Calls to Action in the Truth and Reconciliation Report. The first internship ran from October 2017 to March 2018 and involved three key components:
  - 1) **Lead Programs:** assist with, then lead and create iMAGine Arts Program Activities in all program areas with all groups, incorporating Indigenous cultural content and learning strategies, as well as creating a special outreach program designed to serve Indigenous groups;
  - 2) **Collections Research:** compile data and a report on Indigenous artists and artworks in the Permanent Collection of the Mann Art Gallery; and
  - 3) **Develop a new Indigenous Youth Summer Art Workshop** to be delivered in summer 2018.

Our first intern in this position was Ashley Peterson (Bachelor of Indigenous Social Work from First Nations University). Ashley brought her knowledge of Métis and Cree culture and passion for delivering art therapy-inspired programs and activities focusing on individual health, cultural connection, and wellbeing to the gallery. She created and delivered **the Holistic Health Art Outreach program**, which in 2017 - 2018 delivered 11 art classes to primarily Indigenous women at the **Prince Albert Safe Women's Shelter**. We intend to continue this internship or other employment opportunities to improve our Indigenous cultural content and opportunities.



Ashley Peterson, Indigenous Gallery Education Intern, teaches painting techniques to SHARE participants

### iMAGine Arts Program Statistics

Key successes across all program categories in 2017 were *delivering an increased number of activities which supported the artistic development of child and adult artists, building relationships with partner organizations, and increasing the diversity of participants* (income level, age, cultural background, ability/disability, at-risk status). As in 2016, the majority of activities occurred over a longer time period (1 – 1.5 hours) with increased hands-on artistic engagement for each activity. The addition of the Indigenous Gallery Education Intern during the academic year, as well as the two Summer Student Assistant Educators, had significant impact on the number of programs and types of activities we were able to deliver while I attended to the administration aspects of my position.

iMAGine Arts Visual Art Education Program Statistics 8 Years		
Year	Activities	Participants
2017	203	3,971
2016	237	3,853
2015	208	4,169
2014	146	3,247*
2013	219	4,832^
2012	156	3,751
2011	104	1,914
2010	48	930

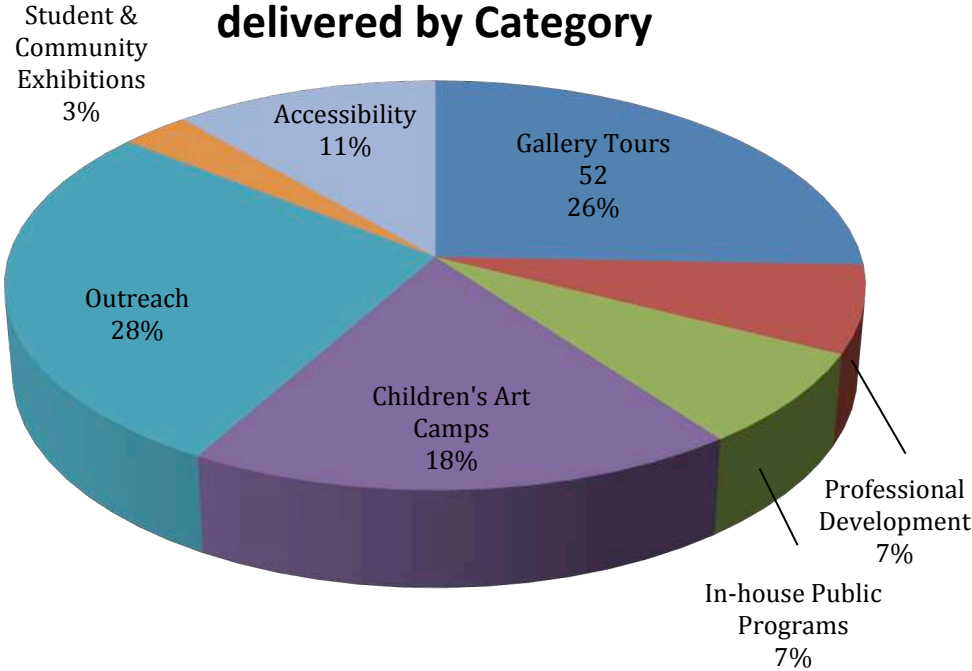
\* lower numbers due in part to Gallery Educator position vacancy  
 ^ higher numbers due in part to ArtSmarts Project Grant with Twyla Exner as artist for PACI mosaic

Full details of the iMAGine Arts Program activities, divided by category and usergroup, are presented below. Particularly notable are the percentages of participants in iMAGine Arts Programs: of all 2017 participants, 21% were students (pre-kindergarten to post-secondary) visiting as a class trip; 35%

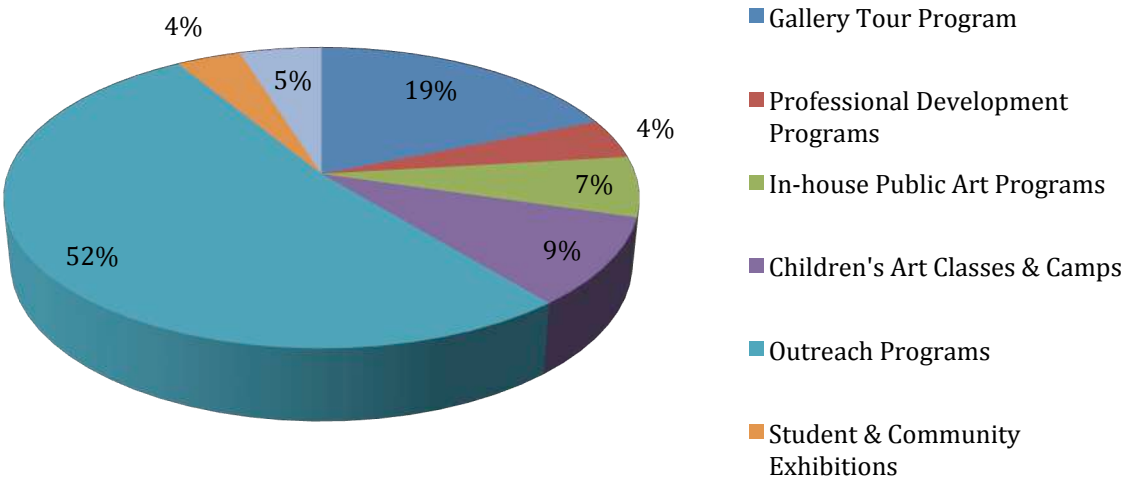
were individuals in target groups participating in in-gallery or outreach programs (artists, individuals with disabilities, seniors in care homes, underserved groups), and 44% participated as members of the general public. This reflects the MAG commitment to bridging culture and community through high quality visual art opportunities, both inside and outside the gallery.

Thanks to my coworkers Jesse, Emma, Randa, Interns Ashley, Jordan, Kayanna, Katherine, and Mashhood, and Board Directors (past and present) of the MAG for their inspiration and support.

**Percentage of total iMAGine Arts Activities delivered by Category**



**Percentage of iMAGine Arts Total Participants by Activity Category**







Canada Day 150(+) Facepainting Fundraiser & Free Drop in Art in Kinsmen Park. MAG volunteer Estelle Hjertaas helps children paint postcards with watercolour.

Gallery Tour + Activity Program				
Dates	Exhibition	# of Tours	# of Participants	Hours
January	Paula Cooley: <i>Mix and Then &amp; Now</i>	4	57	6.5
February - March	Winter Festival Art Show & Sale	14	202	20.75
April - May	Heather Benning: <i>A Prairie Gothic</i> & High School Juried Art Show	8	85	13.5
May - August	George Glenn: <i>Redefinition</i> and Leah Dorion: <i>Two Metis Vests</i>	13	213	19.75
September - October	Sandra Semchuk's <i>Love Stories: Listening &amp; Seeing As Gestures Towards Reconciliation</i> , Northern Image Photographers' <i>Outside the Comfort Zone</i> , and SK Artists of Ability	7	100	11.75
November - December	McGregor Hone: <i>Imprint</i> & Patrick Bulas: <i>The Cat That Slept on a Tortoise Shell</i>	6	91	8.25
		52	748	80.5

Professional Development Programs				
Dates	Program	# of days offered	# of participants	Hours
February 11 <sup>th</sup>	Winter Festival Guest Curator's Walkthrough & Discussion - Zachari Logan	1	81	3
March 4 <sup>th</sup>	CARFAC SK Workshop: Social Media for Artists - Carole Epp	1	15	3.5
May 13 <sup>th</sup>	Sculpture Workshop: Wood, Wire, Burlap, Plaster Armatures - Heather Benning	1	12	7
August 31 <sup>st</sup>	"Artists in Schools" Meeting to discuss Arts Grant funding with teachers; PD for teachers	1	28	1.5
October 15 <sup>th</sup>	CARFAC SK Workshop: Pricing Your Artwork - Ward Schell	1	15	4
November 18 <sup>th</sup>	Introduction to Printmaking Workshop: Linocut & Drypoint - Patrick Bulas	1	11	6
		6	162	25

Dates	Interns & Students	# of days or weeks offered	# of participants	Hours
February 21 <sup>st</sup>	Work Experience: Kierrah Enequist as Art Camp Assistant	5 hrs/day for 4 days	1	20
April 11 <sup>th</sup>	Kayanna Wirtz as Art Camp Leader for April 2017 Camp	7 hours/day for 5 days	1	35
April 12 <sup>th</sup>	Kierrah Enequist as Art Camp facilitator for April 2017 camp	5 hours/day for 4 days	1	20
June 5 <sup>th</sup>	Summer Student: Katherine Roy-Chovin as Assistant Educator	12 weeks	1	420
June 5 <sup>th</sup>	Summer Student: Mashhood Tahir as Collections Assistant	12 weeks	1	420
July 1 <sup>st</sup>	Summer Student: Kayanna Wirtz as Assistant Educator	9 weeks	1	315
July 18 <sup>th</sup>	Internship: Jordan Bulgis as Permanent Collection Intern	16 weeks	1	560
October 30 <sup>th</sup>	Indigenous Gallery Education Intern - Ashley Peterson	12.5 weeks in 2017, 25 weeks total (875 hrs over 2017-18)	1	437.5
		1 - 25 weeks	6	2227.5

In-house Public Art Programs:				
Dates	Program	# of days offered	# of participants	Hours
January - December	Life Drawing with Emma Anderson	8	67	24
	<b>Art Skills</b>	<b>8</b>	<b>67</b>	<b>24</b>
March	PA Literacy Network: Storysack Creation - I Love Fishing With My Mooshum	2	26	5
March & December	Free Family Art Drop-In: Mini Galleries, Holiday Decorations	2	75	6.5
June	Pride Art Night	1	18	2
November	Evergreen Artisan Market Art Drop-In	2	71	11
	<b>Family Art Making</b>	<b>7</b>	<b>190</b>	<b>24.5</b>

Children's Art Camps					
Dates	Program	# of days offered	# of Participants	Registrants	Hours
Feb. 21 - 24	Feb. Art Camp: Experimental Art	4	46	12	12
Apr. 18 - 21	Apr. Art Camp: Animal Mania	4	48	12	12
Jul. 10 - 14	Summer Camp 1: Oh Canada!	5	55	11	15
Jul. 17 - 21	Summer Camp 2: Painting Camp	5	63	13	15
Jul. 24 - 28	Summer Camp 3: Sculpture Camp	5	40	8	15
Jul. 31 - Aug. 4	Summer Camp 4: Superhero Camp	5	65	13	15
Aug. 8 - 11	Summer Camp 5: Eco-Art Recyclables	4	24	6	12
Aug. 14 - 18	Summer Camp 6: Performance Art	5	35	7	15
	<b>Children's Art Camps</b>	<b>37</b>	<b>376</b>	<b>82</b>	<b>111</b>

Outreach						
Dates	Program	Partner	User Groups	# of days offered	# of Attendees	Hours
September 29 <sup>th</sup>	Culture Days – Historical & Architectural Walking Tour	Partnership: Culture Days Hub Grant Committee	Students – Gr. 9-12	1	109	2.50
June 16 <sup>th</sup>	Model Magic octopus & seashell cement mosaics	TLC Daycare, Birch Hills	Students – Pre-K	1	11	1.25
October 5 <sup>th</sup>	Pilot project: Bookbinding Workshop	WP Sandin High School (Shellbrook)	Students – Gr. 9-12	1	14	1.50



March 18 <sup>th</sup>	Bookbinding Workshop at Girl Guide Pathfinder Conference "TNT"	Girl Guides of Prince Albert	Community Group	1	17	2.00
April 27 <sup>th</sup>	Jewelry Making lesson	Girl Guides of Prince Albert	Community Group	1	10	3.00
April 27 <sup>th</sup>	iMAGine Arts Adventures in Sculpture Gallery Tour + 3 Sculpture Lesson Plan demos	SK Association for Community Education	Community Group	1	9	1.25
September-30 <sup>th</sup>	Culture Days - Historical & Architectural Walking Tour	Partnership: Culture Days Hub Grant Committee	Community Group - Newcomers	1	43	2.50
<b>Total School &amp; Community Outreach</b>				<b>7</b>	<b>213</b>	<b>14.00</b>
January - December	Seniors Art Outreach	Mont St. Joseph, Herb Bassett, Parkland Integrated Health Centre (Shellbrook), Pineview Terrace Lodge		16	279	24.75
January - December	Seniors Art Outreach - Intergenerational Art	(Shellbrook Elementary grs. 4 and 5 at Parkland Integrated Health Centre; gr. 12 Carlton at Mont St. Joseph)		11	292	15.50
<b>Total Seniors' Art</b>				<b>27</b>	<b>571</b>	<b>40.25</b>
November 23 <sup>rd</sup>	Christmas Art Spot with CTV's Stephanie (snowman hugging fold pop up card)	CTV		1	1	0.25
October	Artists of Ability Panel & Workshop FB Live Broadcast (see under Student & Community Exhibitions)					
<b>Total Media</b>				<b>1</b>	<b>1</b>	<b>0.25</b>
July	Art in the Park at Narrow Hills, Great Blue Heron, and Candle Lake Provincial Parks: Cement maple leaf stepping stones, painting watercolour skies, leaf printing with press	Saskatchewan Parks	General Public - Families	3	155	6.00

January - February	Canada 150 Mosaic Mural Tiles	PACI, YWCA Newcomers, Caleb Village Seniors, Sask Polytech, Mann Art Gallery & City of PA		9	360	30.50
June 17 <sup>th</sup>	Street Fair: Facepainting Fundraiser + free art activity: paper spinners & watercolour postcards	PADBID	General Public - Families	1	200	7.00
June 21 <sup>st</sup>	Facepainting and Metis Mini Sash Fingerweaving	PA Indian & Metis Friendship Centre	General Public - Families	1	85	4.50
July 1 <sup>st</sup>	Canada Day Facepainting Fundraiser + Free Art Activity	Saskatchewan Multicultural Association	General Public - Families	1	143	5.00
July 20 <sup>th</sup>	KidzFest: Collaborative PA Skyline Painting (plywood)	City of Prince Albert	General Public - Families	1	65	3.00
September 30 <sup>th</sup>	Culture Days - Historical & Architectural Walking Tour SELF DIRECTED	Partnership: Culture Days Hub Grant Committee	General Public	1	120	6.00
July - August	Summer on the Square	PADBID	General Public - Families	4	162	12.50
<b>Total Community Celebration</b>				<b>21</b>	<b>1290</b>	<b>74.50</b>
				<b>56.00</b>	<b>2075.00</b>	<b>129.00</b>

<b>Student &amp; Community Exhibitions</b>						
<b>Dates</b>	<b>Program</b>	<b>Partner</b>	<b>User Groups</b>	<b># of Attendees</b>	<b># of days offered</b>	<b>Hours</b>
April 6 <sup>th</sup>	6th Annual High School Juried Art Show & Heather Benning Reception	Local high schools	Gr. 9 - 12 students	5	85	2
October 19 <sup>th</sup>	SK Artists of Ability - Opening Ceremony (Maggie Dixon, Elder Liz Settee, Lana Wilson, Connie Farber of SCI)	SK Artists of Ability Festival - Spinal Cord Injury SK	Disabilities - Adults	1	20	1
October 19 <sup>th</sup>	SK Artists of Ability - Writing Workshop with Lynda Monahan	SK Artists of Ability Festival - Spinal Cord Injury SK	Disabilities - Adults	1	13	3

October 20 <sup>th</sup>	SK Artists of Ability - Panel Discussion and Facebook Live broadcast (Maggie Dixon, Lana Wilson, Connie Farber)	SK Artists of Ability Festival - Spinal Cord Injury SK	Disabilities - Adults	1	13	3
October 20 <sup>th</sup>	SK Artists of Ability - Accessible Art Workshop with Lana Wilson	SK Artists of Ability Festival - Spinal Cord Injury SK	Disabilities - Adults	1	5	3
October 20 <sup>th</sup>	SK Artists of Ability - Open Stage at Mann Art Gallery (Maggie Dixon, Lana Wilson, John Quin)	SK Artists of Ability Festival - Spinal Cord Injury SK	Disabilities - Adults	1	16	2
				6	152	14

Accessibility Programming					
Dates	Program	User Groups	# of days offered	# of Attendees	Hours
January - June	Youth Residence Art Program	At-risk youth	9	48	13
July - August	Art Abilities Summer Art Program with SK Association for Community Living	Youth with disabilities	7	86	10
October - December	SHARE Art Class	Adults with disabilities	4	40	6
December	Holistic Health Outreach at PA Women's Safe Shelter	Women & families living in safe shelter	3	19	4.5
			23	193	33.5



Clay jars made by summer art camp participants, inspired by the face jugs & Charley Ferrero's exhibition *Le Look*.



## iMAGine Arts User Group Statistics

iMAGine Arts programming was delivered to the following community groups:

- **primary and secondary schools** within the local and surrounding districts (Public, Catholic, and Francophone);
- **post-secondary institutions** (First Nations University of Canada, Gabriel Dumont Institute, University of Saskatchewan - GDI SUNTEP Program, Saskatchewan Polytechnic, SIIT);
- Participants from the following community organizations:
  - **PA Mental Health**
  - **Hope's Home**
  - **Girl Guides of Canada**
  - **Herb Bassett Home**
  - **Parkland Terrace Home**
  - **Mont St. Joseph Home**
  - **YWCA Newcomers Settlement Services**
  - **Saskatchewan Parks**
  - **Indian & Métis Friendship Centre**
  - **PA Youth Residence**
  - **SHARE**
  - **SK Association for Community Living**
  - **Prince Albert Pride**

Partnerships were maintained with the following arts and culture organizations:

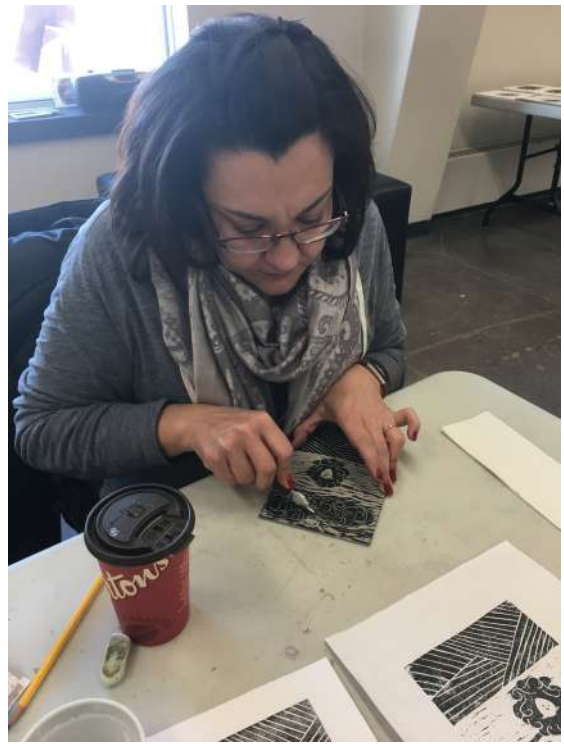
- **Saskatchewan Arts Board**
- **CARFAC SK**
- **Indigenous Peoples Artist Collective (IPAC)**
- **PA Arts Centre**
- **PA Council for the Arts**
- **PA Multicultural Council**
- **PA Historical Society**
- **John M. Cuelenaere Public Library**
- **Saskatchewan Association for Community Educators**
- **Community Networking Coalition**

iMAGine Arts Users by Age Demographic	
User Group	# of Users
Children: 0 – 5 years	299
Children: 6 – 11 years	1150
Teens: 12 – 16 years	97
Youth: 15 – 17 years	619
<b>Total Children (0 - 17)</b>	<b>2165</b>
<b>Adults (18 - 54)</b>	<b>921</b>
<b>Older adults (55+ years)</b>	<b>387</b>
<b>All ages, uncategorized</b>	<b>498</b>
<b>Grand Total</b>	<b>3,971</b>

2017 iMAGine Arts Participants by Demographic			
<b>General Public</b>		<b>1766</b>	<b>44%</b>
General Public - Children 7-12	457		
General Public	433		
General Public - Families	876		
<b>Students</b>		<b>828</b>	<b>21%</b>
Students - Pre-K	33		
Students - K - Gr. 2	117		
Students - Gr. 3-6	78		
Students - Gr. 6-9	87		
Students - Gr. 9-12	393		
Students - Post-Secondary	120		
<b>Target Groups</b>		<b>1377</b>	<b>35%</b>
At-Risk Youth	74		
Women in Shelter	19		
Youth with Disabilities	124		
Adults with Disabilities	107		
Intergenerational Art: Seniors + Children	292		
Seniors + Seniors in Care Homes	289		
Community Group - Newcomers & Refugees	124		
Community Group	118		
Artists & General Public creators	230		
<b>Total</b>	<b>3,971</b>	<b>3,971</b>	



Pat Bliss uses burlap and plaster to make a sculpture armature at the Armature Workshop led by Heather Benning



Rachel Mardell makes a linocut printing block at the Introduction to Printmaking Workshop led by Patrick Bulas

# Permanent Collection Acquisitions

In 2017 the Mann Art Gallery acquired 36 artworks by purchase and donation. Our Permanent Collection now contains 3,825 artworks. Artworks in the Permanent Collection are shared through exhibitions, occasional displays of individual pieces in the Project Space, and in the Permanent Collection calendar.

## Purchases

The following pieces were purchased thanks to the generous support of Diane & Roger Mann:

### Heather Benning

*Work Hard, Be Nice*, 2016, bronze, resin, wood, fabric, paint, 44 x 34 x 26 cm; 173 x 27 x 27 cm

*Work Hard, Be Nice*, 2016, resin, 42 x 16 x 12 cm

### Kylee Blackburn

*Northern Negativity*, 2017, sinew, negative prints, 22 x 36 x 23 cm

### Pat Bliss

*Tower Duty*, 2017, acrylic paint on canvas, 122 x 61 cm

### Michel Boutin

*Old Boy*, 2016, enamel on canvas, 170 x 122 cm

### George Glenn

*Self Portrait*, 2013, acrylic paint and tar gel on canvas, 101.5 x 76 cm

*1<sup>st</sup> St N (WD)*, 2008, oil paint on canvas, 61 x 76 cm

*Lake*, 2013, acrylic paint and tar gel on canvas, 76.2 x 101.5 cm

*Landscape with Tiger Lilies*, 2015, acrylic paint and tar gel on canvas, 76 x 101.5 cm

*Rain 263*, 2011, oil paint on canvas, 60.5 x 122 cm

*Winter*, 2015, acrylic paint and tar gel on canvas, 91.5 x 121.5 cm

### Earl McKay

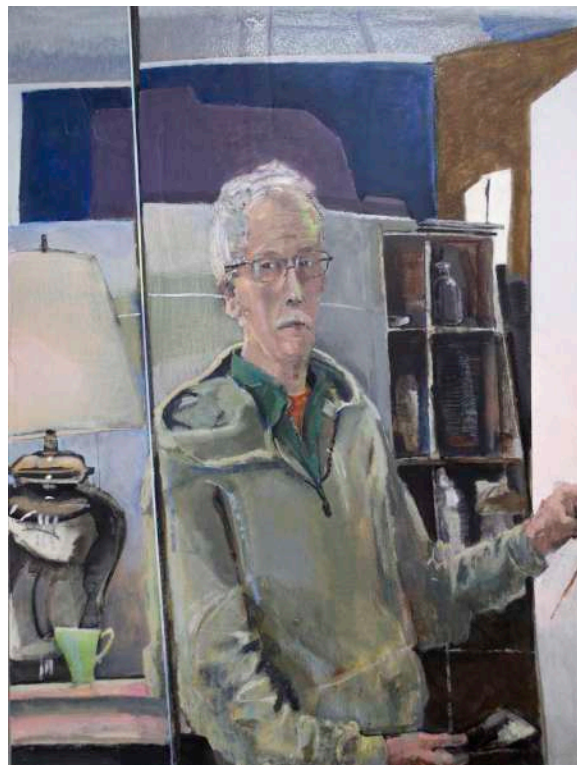
*Memories of Days Gone By*, 2015, acrylic paint on bison skull, 26 x 46 x 53 cm

### Karen Pask-Thompson

*Dismissed*, 2017, acrylic paint, oil paint, and graphite on canvas, 76 x 122 cm

### Carol Wylie

*Odalisque*, 2016, oil on canvas, 122 x 91.5 cm



George Glenn, *Self Portrait*, 2013, acrylic paint and tar gel on canvas, 101.5 x 76 cm





Karen Pask-Thompson, *Dismissed*, 2017, acrylic, oil, and graphite on canvas, 76 x 122 cm



Pat Bliss, *Tower Duty*, 2017, acrylic on canvas, 122 x 61 cm





George Glenn, *Rain 263*, 2011, oil on canvas, 60.5 x 122 cm



George Glenn, *Lake*, 2013, acrylic and tar gel on canvas, 76.2 x 101.5 cm



George Glenn, *Landscape with Tiger Lilies*, 2015, acrylic and tar gel on canvas, 76 x 101.5 cm



George Glenn, *Winter*, 2015, acrylic and tar gel on canvas, 91.5 x 121.5 cm



George Glenn, *1<sup>st</sup> St N (WD)*, 2008, oil on canvas, 61 x 76 cm



Heather Benning, *Work Hard, Be Nice*, 2016, resin, 42 x 16 x 12 cm



Earl McKay, *Memories of Days Gone By*, 2015, acrylic on bison skull, 26 x 46 x 53 cm



Kylee Blackburn, *Northern Negativity*, 2017, sinew, negative prints, 22 x 36 x 23 cm





Michel Boutin, *Old Boy*, 2016, enamel on canvas, 170 x 122 cm



## Donations

### From Alex Mullie:

Alex Mullie, *The Trail of Tears* (1/3), 2011, etching on watercolour paper, 20 x 20.5 cm

Alex Mullie, *A Room with a View* (1/3), 2011, etching on watercolour paper, 20.5 x 25.5 cm

Alex Mullie, *The Potter's Field* (2/3), 2012, etching on watercolour paper, 22.5 x 28 cm

Alex Mullie, *A Little Guernica*, 2012, etching on watercolour paper, 23 x 28.2 cm

Alex Mullie, *Death and the Artist* (2/3), 2012, etching on watercolour paper, 23 x 28 cm

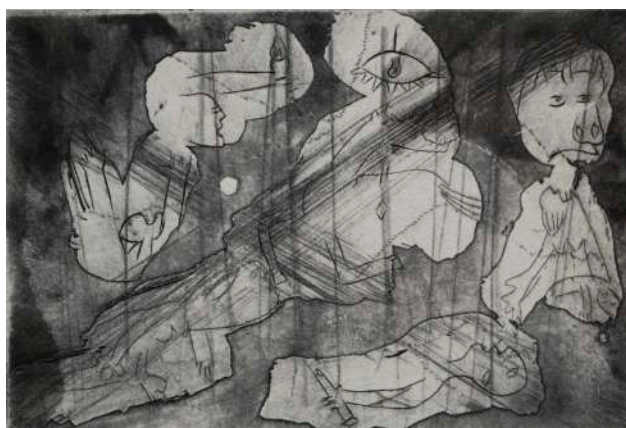
Alex Mullie, *The Old P.A.* (2/3), 2012, etching on watercolour paper, 22.5 x 28 cm



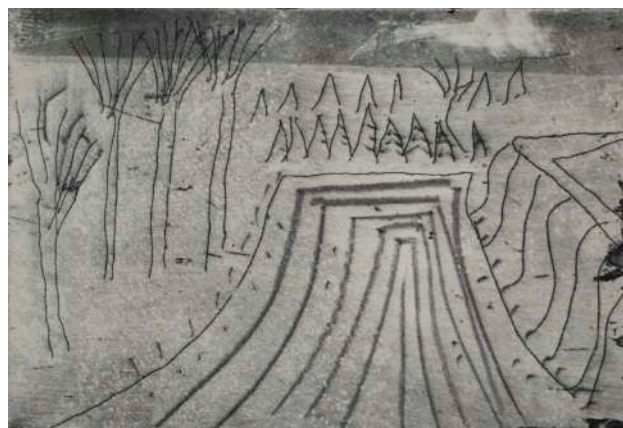
Alex Mullie, *A Room with a View*, 2011



Alex Mullie, *The Trail of Tears*, 2011



Alex Mullie, *A Little Guernica*, 2012



Alex Mullie, *The Potter's Field*, 2012



Alex Mullie, *Death and the Artist*, 2012



Alex Mullie, *The Old P.A.*, 2012

**From Winona Senner:**

Ralph Coffey, *Untitled* (metal necklace), n.d., metal jewelry, 22 x 0.5 x 1 cm

Ralph Coffey, *Untitled* (butterfly brooch), n.d., metal jewelry, 8 x 6 x 0.5 cm

Ralph Coffey, *Untitled* (bird brooch), n.d., metal jewelry, 4 x 11 x 0.5 cm

Aganetha Dyck, *Untitled* (wax tablet), n.d., wax, 18 x 1 x 9 cm

Aganetha Dyck, *Untitled* (felt pickles), n.d., felt sculpture, 13 x 7.5 x 7.5 cm

Aganetha Dyck, *Untitled* (mason jar #1), n.d., found objects, wax, 12 x 8 x 8 cm

Aganetha Dyck, *Untitled* (sock bundle), n.d., fabric sculpture, 9 x 12 x 5 cm

Aganetha Dyck, *Untitled* (honeycomb lion), n.d., wax sculpture, 11 x 15 x 9 cm

Aganetha Dyck, *Untitled* (honeycomb hanger), n.d., wax sculpture, 12 x 40 x 2 cm

Aganetha Dyck, *Untitled* (resin buttons), n.d., resin sculpture, 7.5 x 11.5 cm

Andréé Felley-Martinson, *Still Life*, 1993, oil pastel on paper, 7.5 x 11.5 cm

Margaret O. (Peggy) Kerr, *Spring*, 1992, embroidery on fabric, 5 x 9.5 cm

Olesia Kowalsky, *Earth Form*, n.d., ceramic, 30 x 36 x 37 cm

Adrian Vinish, *Pond on the Back Road to Anglin Lake #3*, 1993, acrylic paint on matboard, 8 x 12.5 cm

Adrian Vinish, *Reflections of Meadow Bluff with Loon, Anglin Lake*, 1993, acrylic paint and ink on paper, 21.5 x 15.5 cm

**From Carin van Walsem:**

Margreet van Walsem, *Inside Out*, 1977-78, hand-woven wool tapestry, 266.7 x 142.3 cm



Adrian Vinish, *Reflections of Meadow Bluff with Loon, Anglin Lake*, 1993, acrylic and ink on paper, 21.5 x 15.5 cm



Adrian Vinish, *Pond on the Back Road to Anglin Lake #3*, 1993, acrylic on matboard, 8 x 12.5 cm

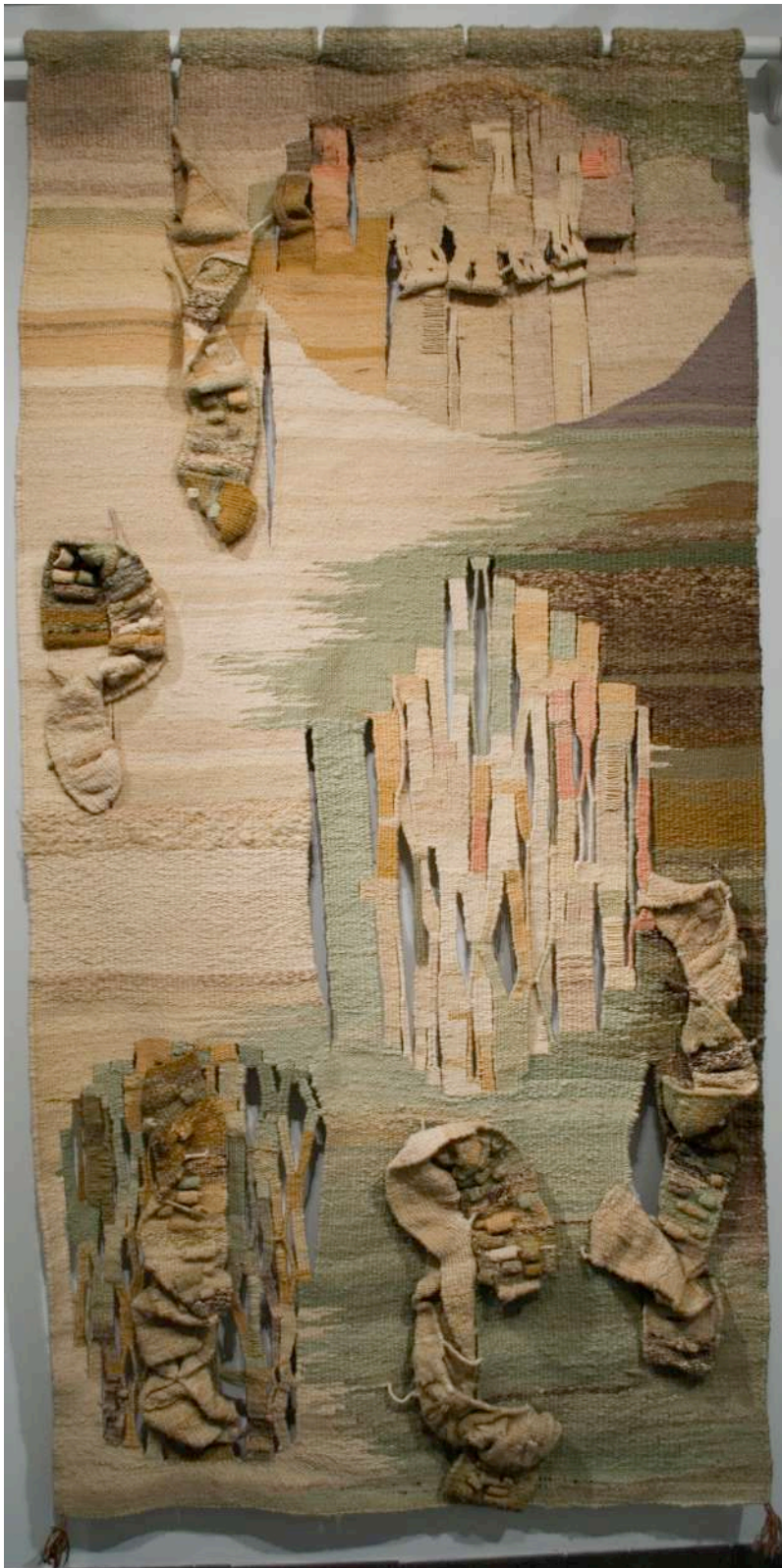


Aganetha Dyck, *Untitled* (honeycomb hanger), n.d., wax sculpture, 12 x 40 x 2 cm

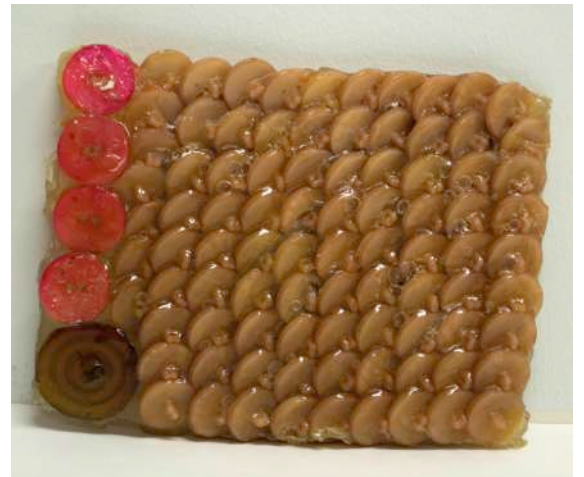


Andréé Felley-Martinson, *Still Life*, 1993, oil pastel on paper, 7.5 x 11.5 cm





Margreet van Walsem, *Inside Out*, 1977-78, hand-woven wool tapestry, 266.7 x 142.3 cm



Aganetha Dyck, *Untitled (resin buttons)*, n.d., resin sculpture, 7.5 x 11.5 cm



Aganetha Dyck, *Untitled (mason jar #1)*, n.d., found objects, wax, 12 x 8 x 8 cm



Olesia Kowalsky, *Earth Form*, n.d., ceramic, 30 x 36 x 37 cm



# Fundraisers

The Mann Art Gallery's fundraising in 2017 comprised the annual Wolf Back A Beer – beer-tasting extravaganza and funds raised from bar sales at exhibition receptions and partnership events. Fundraiser revenue is currently earmarked for general gallery operations, including summer student and intern salaries (offsetting costs not covered by grants). As numerous project grants were either ceased or cut following effects of the provincial government's 2017-18 budget, fundraising revenue in the future will likely continue be used to ensure that gallery operations are not interrupted.



Attendees sample a variety of beers at the Wolf Back A Beer

## Wolf Back a Beer Fundraiser

**Wolf Back a Beer**

January 20th, 2017 6:00 - 11:00 PM  
E.A. Rawlinson Centre for the Arts

**TICKETS**  
\$20.00 advance  
Purchase at the Mann Art Gallery  
Includes 5 Free Beer Tastings  
\$25.00 at the door

**BEER TASTING**  
**LIVE MUSIC**  
**SNACKS FROM**  
**Shananigans**

A fundraiser for the  
**Mann Art Gallery**

306-763-7080  
mannartgallery.ca

Wolf Back a Beer was originally initiated as a fundraiser to acquire *Mahihkan*, the bronze wolf sculpture by Joe Fafard. Following the installation of the sculpture in spring 2016, we heard loud and clear that local citizens valued and enjoyed this annual event. Therefore we continue to run a well-loved beer sampling extravaganza. At the 6<sup>th</sup> Annual Wolf Back A Beer, 400 attendees filled the E.A. Rawlinson Centre and the Mann Art Gallery to try new and familiar specialty beers, enjoy live music, sample snacks from Shananigans, and support the fine arts. We raised more than \$16,000.00 (gross) towards gallery operations.

Many thanks to the following local businesses for sponsoring various aspects of the event: Peavey Mart, Lake Country Co-op, B & P Water Supply, Rona, and Absolute Identification Security and Investigation. Additionally, Wolf Back a Beer only exists thanks to the generous and dedicated assistance of volunteers. Many thanks to the 48 volunteers who ensure that the event runs smoothly.

# Volunteers

The Mann Art Gallery relies on the crucial support of volunteers to fulfill its Mission. Many thanks to the **68** individuals who devoted a total of **897.5 hours** to the Gallery's fundraisers, events, and exhibitions in 2017.

Volunteer Name	Project	Hours	Total
Cat Abrametz	Wolf Back A Beer	2.50	1.50
Alanna Adamko	iMAGine Arts Education	3.00	3.00
Sandra Anderson	Wolf Back A Beer	2.50	2.50
Lorraine Beardsworth	Wolf Back A Beer	2.50	11.50
	Winter Festival	3.00	
	iMAGine Arts Education	6.00	
Reg Beardsworth	iMAGine Arts Education	3.00	6.00
	Winter Festival	3.00	
Jess Begin	Wolf Back A Beer	2.50	2.50
Carmen Bellehumeur	Wolf Back A Beer	2.50	5.50
	Winter Festival	3.00	
Donna Bergen	Wolf Back A Beer	2.50	2.50
Kylee Blackburn	Wolf Back A Beer	2.50	10.50
	Winter Festival	8.00	
Trina Boran	Wolf Back A Beer	8.00	83.00
	Board of Directors	75.00	
Celeste Boran-Fetch	Wolf Back A Beer	2.50	2.50
Wendy Bourassa	Wolf Back A Beer	2.50	2.50
Cheryl Brokop	Receptions	1.0	1.0
Lorraine Brokop	Wolf Back A Beer	2.50	2.50
Conrad Burns	iMAGine Arts Education	4.50	4.50
Gil Campbell	Receptions	5.00	5.00
Linsey Campbell	Wolf Back A Beer	2.50	2.50
Gail Carlson	Wolf Back A Beer	2.50	2.50
Linda Clavelle	Wolf Back A Beer	25.00	100.00
	Board of Directors	75.00	
Howard Clavelle	Wolf Back A Beer	15.00	15.00
Marilyn Cook	Wolf Back A Beer	2.50	2.50
Alex Crawley	Wolf Back A Beer	6.00	14.00
	Winter Festival	5.00	
	Venue Rental	3.00	
Alice Cullen	Wolf Back A Beer	2.50	9.00
	Winter Festival	3.00	
	Receptions	3.50	
Grace Dansereau	iMAGine Arts Education	3.00	3.00
Kierrah Enequist	Wolf Back A Beer	2.50	6.00
	Receptions	3.50	

(Volunteers continued...)

Volunteer Name	Project	Hours	Total
Tyson Fetch	Wolf Back A Beer	2.50	2.50
Jon Fraser	Wolf Back A Beer	5.00	5.00
Lynn Gordon	Wolf Back A Beer Board of Directors	8.00 48.00	56.00
Pat Grayston	Wolf Back A Beer Winter Festival	2.50 4.00	6.50
Cheryl Hislop	Wolf Back A Beer Winter Festival	2.50 7.00	9.50
Estelle Hjertaas	iMAGine Arts Education	3.00	3.00
Kenny Holder	Board of Directors	9.00	9.00
Daniel Hopkins	Wolf Back A Beer Winter Festival Receptions 2016 AGM	2.50 5.00 4.00 2.00	13.50
Joanne Johnston	Wolf Back A Beer Winter Festival Receptions	6.00 3.00 3.50	12.50
Gwen Jones	Winter Festival Receptions	3.00 2.50	5.50
Jon Kendrick	Wolf Back A Beer Winter Festival Receptions Exhibition Installation/Strike Permanent Collection Tasks General Tasks Board of Directors	15.00 13.00 3.50 60.00 17.00 7.00 9.00	124.50
Curtis Kerr	iMAGine Arts Education	3.00	3.00
Arleen Koshman	Wolf Back A Beer	2.50	2.50
Gerry Koshman	Wolf Back A Beer	2.50	2.50
Agnes Kusior	Wolf Back A Beer Winter Festival	2.50 4.00	6.50
Christina Lorentz	Board of Directors	9.00	9.00
Al Loustel	Wolf Back A Beer Board of Directors	15.00 55.00	70.00
Diane Mann	Board of Directors	45.00	45.00
Michele McFarlan	Wolf Back a Beer iMAGine Arts Education	2.50 5.00	2.50
Wes Moore	Board of Directors	6.00	6.00
Kim Morrall	Wolf Back A Beer Receptions	3.00 3.50	6.50
Alma Newman	Wolf Back A Beer Winter Festival	2.50 4.00	6.50
Duncan Newman	Wolf Back A Beer	2.50	2.50

(Volunteers continued...)

Volunteer Name	Project	Hours	Total
Annette Nieman	Wolf Project Receptions	2.50 3.50	6.00
Dennis Ogrodnick	Wolf Back A Beer	5.00	5.00
Jan Olesko	Wolf Back A Beer	3.00	3.00
Roman Orynik	Wolf Project	15.00	15.00
Madison Pettem	iMAGine Arts Education Receptions	4.00 3.00	7.00
Shannon Pettem	Wolf Back A Beer iMAGine Arts Education Receptions	2.50 4.00 7.00	13.50
Christina Pico	Board of Directors	9.00	9.00
Susan Prakash	Wolf Back a Beer Receptions Board of Directors	8.00 3.50 60.00	71.50
Judie Relitz	Winter Festival	4.00	4.00
Lynn Salo	Wolf Back A Beer	2.50	2.50
Bernie Schimnosky	iMAGine Arts Education	3.00	3.00
Linda Skibinsky	Winter Festival	4.00	4.00
Sheila Soulier	Wolf Back A Beer	2.50	2.50
Elaine Sturby	Wolf Back A Beer Winter Festival	2.50 4.00	6.50
Gail Syverson	Receptions	3.50	3.50
Mikaela Tenkink	Receptions	3.50	3.50
Matthew Toon	Wolf Back A Beer Winter Festival Receptions	5.00 3.00 2.50	10.50
Jacinda Tyndale	Receptions	11.00	11.00
Carin van Walsem	Wolf Back a Beer	2.50	2.50
Lucy Wells	Winter Festival	3.00	3.00



Volunteers extraordinaire Matthew Toon and Reg Beardsworth



# Members

## Patron

Diane & Roger Mann

## Contributor

Howard & Linda Clavelle

Kim & Roman Orynik

Heinrich & Jacqueline Goliath

Gail Syverson

Cheryl Ring

## Individual and Family

Muveddet Al-Katib

Faye Arthurson

Nicki Ault

Bonnie Bailey

Noah Ballantyne

Anne C. Basso

Reg & Lorraine Beardsworth

Carmen Bellehumeur

Donna Bergen & Bill Bray

Elaine Bergen

Kathie Bird

Kylee Blackburn

Pat Bliss & Heather Adamson

Trina Boran

Kathy Bradshaw

Myk Brazier

Grant Breadner

Linda Breadner

Lorraine Brokop

Jennifer Brown

Mary Brown

Jesse Campbell

Linsey Campbell

Jennifer Brown

Gail Carlson

Patti Cannon-Levesque

Cory & Jim Chad

James M. Clow

Patti Koivisto

Colleen Code

Bonnie Conly

Paula & Ron Cooley

Alex Crawley

Alice Cullen

Chris Dansereau

Grace Dansereau

Bonnie Denny

Sheila Devine

Ray Dinnell

Forrest Dogger

Lilian Donahue

Ann Donald

Leah M. Dorion

Mackenzie Dupre

Bruce Ecker

Hank Ethier

Sharon Feschuk

Denise & Steve Flaman

Fern Forbister

Cam Forrester

Kelly Franklin

Thomas Gertz

George Glenn

Lynn Gordon

Marte Grant

Pat Grayston

Andre Guillet

Amy Hadley

Richard Halcro

Greg Hargarten

Lee Harris

Annette Henbid

Miranda Henderson

Jenny Heslop

Cheryl Hislop

Heather Hochbaum

Chris Hodge

Randa & Daniel Hopkins

Robert & Dorene Hopkins

Michaela Hoppe

Valerie Joy Horner

June Jacobs

Jack & Linda Jensen

Leah Joelson

Hilary Johnstone

Gwen Jones

Miranda Jones

Fran Karakochuk

Linda Kaskow

Shelley Kaszefski

Jon Kendrick

Curtis Kerr

Lorraine Khachatourians

R. Klenz

Darsey Korchinski

Arleen & Gerry Koshman

Irene Kostka

Dwight Krauss

Agnes Kusior

Fran LaFaver

Randi Lalonde

Ruby Lalonde

Diane Larouche Ellard

Ev Letendre

Al & Bev Loustel

Judy MacLeod Campbell

(Individual and Family 2017 Memberships continued...)

Ellen MacNeill	Kimberly Roblin	Meryl Wood
Karen Maguire	Anita Rocamora	Joe Woytowich
Diane & Harris May	Audrey Roller	Karen Wudrich-Mattock
Michele McFarlen	Jessy Ruszkowski	Carol Wylie
Donna McKeand-Smith	Joan Ryan	Dalelene Yelland
Earl McKay	Kim Richard Salo	Gerald Youzwa
Mary McLeod	Lynn Salo	
Shirley McMahan	Helena Sarich	
Brooks McMullin	Bernie Schimnosky	
Judy McNaughton & Michel Boutin	Sharon Schoenfeld	
Valerie Miles	Patricia Sinclair	
Jodi Miller	Nicola Sherwin-Roller	
Grant Moor	Kathleen Slavin	
Kim Morrall	Kim Sow	
Paige Mortensen	Roger Spink	
Jerome Mrazek	Rose Marie Stadnyk	
Alex Mullie	Marcel St. Amand	
Ryan Mulligan	Carrie Stene	
Valerie Munch	Donna Stockdale	
Gerald F. Murphy	Elaine Sturby	
Noella Nesdoly	Pat Suchorab	
Kim Neudolf	Suzanne Surkan	
Alma & Duncan Newman	Mark Teskey	
Annette Nieman	Elsy Thistlewaite	
Carolyn Nording	Gord Thompson	
Bill Oleniuk	Ken Tickner	
Jan Olesko	Laurie Trithardt	
Karen Pask-Thompson	Paul Trottier	
PA Spinners & Weavers Guild	Roger Trottier	
Beryl Peake	Mikaela Turnbull	
Rod Peterson	Hervé Vallée	
Shannon Pettem	Ken van Rees	
Davis Phaneuf	Carin van Walsem	
Bob Pitzel	Valerie Warwick	
Teena Polle	Marilyn Weiss	
Susan & Ravi Prakash	Patricia Wiebe	
Birgit Raduenz	Wayne Willis	
Rhonda Rasmussen	Lana Wilson	
Judie Relitz	Linda Wolch	
June Ricklefs	Kayanna Rae Wirtz	

# Partnerships



The Indigenous Peoples Artist Collective  
of Prince Albert Inc.



John V. Hicks  
Gallery



# Sponsors

## Patron Sponsor:



## Fundraising Sponsors:



B & P Water Shop  
Pure. Simple. Refreshing.



## Media Sponsors:

Prince Albert  
**DAILY HERALD**



pa**NOW**.com



# Cultural Sponsors



City of  
**Prince  
Albert**



**Community  
Initiatives  
Fund**

Connect • Engage • Thrive



MUSEUMS  
ASSOCIATION *of*  
SASKATCHEWAN



Canadian  
Heritage

Patrimoine  
canadien



Canada Council  
for the Arts

Conseil des Arts  
du Canada

# Attendance Statistics

## Attendance by Exhibitions

Exhibition	Reception	Tours	General	TOTAL
Paula Cooley: Mix	60	57	600	717
Then & Now: Selections From the Permanent Collection				
41 <sup>st</sup> Annual Winter Festival Juried Art Show & Sale	200	202	3,800	4,202
Heather Benning: A Prairie Gothic	75	85	2,000	2,160
6 <sup>th</sup> Annual High School Juried Art Show				
George Glenn: Redefinition	100	213	3,000	3,313
Paige Mortensen: Portals				
Prince Albert Grand Council: Fine Arts Festival Display	N/A			
Bonnie Gilmour & Charley Farrero: Le Look	45	N/A	1,200	1,245
Leah Dorion: Two Metis Vests	N/A	213	2,000	2,213
Northern Image Photographers: Beyond the Comfort Zone	25	100	2,200	2,353
Sandra Semchuk: Love Stories	28			
Imprint: Printmaking by Mac Hone	45	91	650	786
Patrick Bulas: The Cat That Slept on a Tortoise Shell				
TOTALS	578	961	15,450	16,989

## Special Events, Partnerships, and Rentals

Title	TOTAL
Music Concert Rentals	200
Wolf Back A Beer	400
Canada 150 Mosaic Mural Workshops	300
PAPHR Volunteer Appreciation	250
Vagina Monologues (Spark Theatre partnership)	845
Pitos Waskochepayis IV: IPAC Mini Performance	25
Sask Polytechnic Convocation Luncheon	50
Global Neighbours Fundraiser	78
Kyla Annual Show & Sale	300
Evergreen Artisan Festival	1,200
<b>TOTAL RENTAL &amp; PARTNERSHIP VISITORS:</b>	<b>3,648</b>

## Education Attendance

Program	TOTAL
Gallery Tour Program	748
Professional Development Programs	170
In-house Public Art Programs	257
Children's Art Classes & Camps	376
Outreach & Community Programs	2,075
Student & Community Exhibitions	152
Accessibility Programs	193
<b>TOTAL EDUCATION VISITORS:</b>	<b>3,971</b>

**TOTAL MAG ATTENDANCE IN 2017: 24,608**