

MannArtGallery

2024

Annual Report



Image: installation of *Tone Poems*, a solo exhibition by Rob Froese, 2024

# Table of Contents

**Board of Directors and Staff..... 2**

**Financials Summary..... 6**

**Exhibitions..... 13**

**Arts Education Programs..... 27**

**Engagement..... 32**

**Our Funders and Partners..... 36**

## Vision

The Mann Art Gallery is the catalyst that bridges culture and community through vitality in the visual arts.

## Mission

The Mann Art Gallery engages, facilitates and stimulates the development, presentation and preservation of the visual arts for the diverse community of Prince Albert and North Central Saskatchewan.

## Values

- In realizing this Vision, the Mann Art Gallery is
- Defined by positive and respectful relationships – between and among its staff, volunteers and board members as well as with its clients and stakeholders.
  - Professional and knowledgeable – operating with a high degree of professionalism in its artistic and business operations and its governance
  - Inclusive, accessible and welcoming – serving a diverse population and meeting a wide range of community needs and interests
  - Committed to supporting and valuing artists, who are at the center of its operation and programs.

## Treaty and Land Acknowledgement

We acknowledge that the Mann Art Gallery is located and operates in the traditional lands referred to as Treaty 6 Territory and the homeland of the Dakota, Cree, and Metis. The City of Prince Albert and all the people here are beneficiaries of this peace and friendship treaty, and we endeavour to honour this in our operations and programming.

## Board of Directors

Jennifer Brown, Chair

Curtis Kerr, Treasurer

Patti Cannon-Levesque, Secretary

Emma Anderson

George Glenn

Diane Mann

Wesley Moore

Kim Orynik

## Staff

Rebecca LaMarre/Jesse Campbell (Interim),  
Judy McNaughton (Interim)  
Artistic Director

Emma Anderson  
Collections

Carolyn Carleton  
Administrative Director

Lana Wilson  
Education Programs

Leah Henderson  
Administrative Assistant



Left to right: Lana Wilson, Jesse Campbell, Emma Anderson, Madeline LaHaye, Carolyn Carleton, Leah Henderson

# A Message from the Chair

## Statement

The 2023/2024 year was a time of meaningful growth and transition for the Board of the Mann Art Gallery. We bid farewell to two esteemed board members: Brenner Holash, who chose not to seek re-election in order to pursue other aspirations, and Kurt Fuchs, who stepped down due to family commitments. We are deeply grateful for their service and dedication, and we extend our best wishes as they embark on new chapters. We hope to welcome them back to the gallery in the future, whether as guests or collaborators.

In the spirit of renewal, we were pleased to welcome back Jesse as Interim Artistic Director. Her leadership, creativity, and deep commitment to the gallery are widely respected, and her continued contributions have brought valuable continuity during this period of change.

We are also pleased to report that the gallery successfully secured continued funding from the City of Prince Albert. This support has enabled us to maintain operations with minimal disruption and has been instrumental in preserving the strength and consistency of our programming.

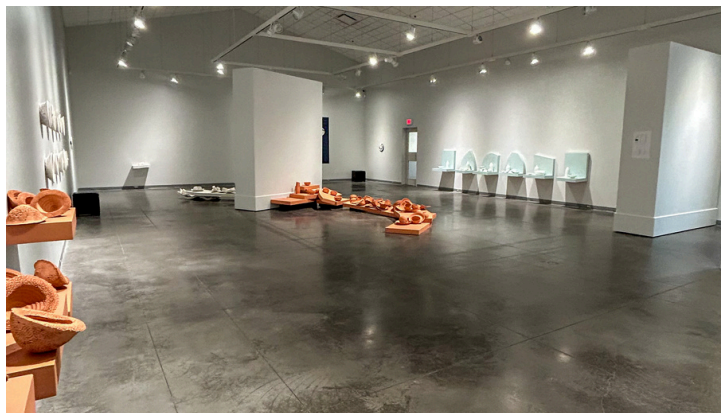


Image: installation of *Tone Poems* by Rob Froese, 2024

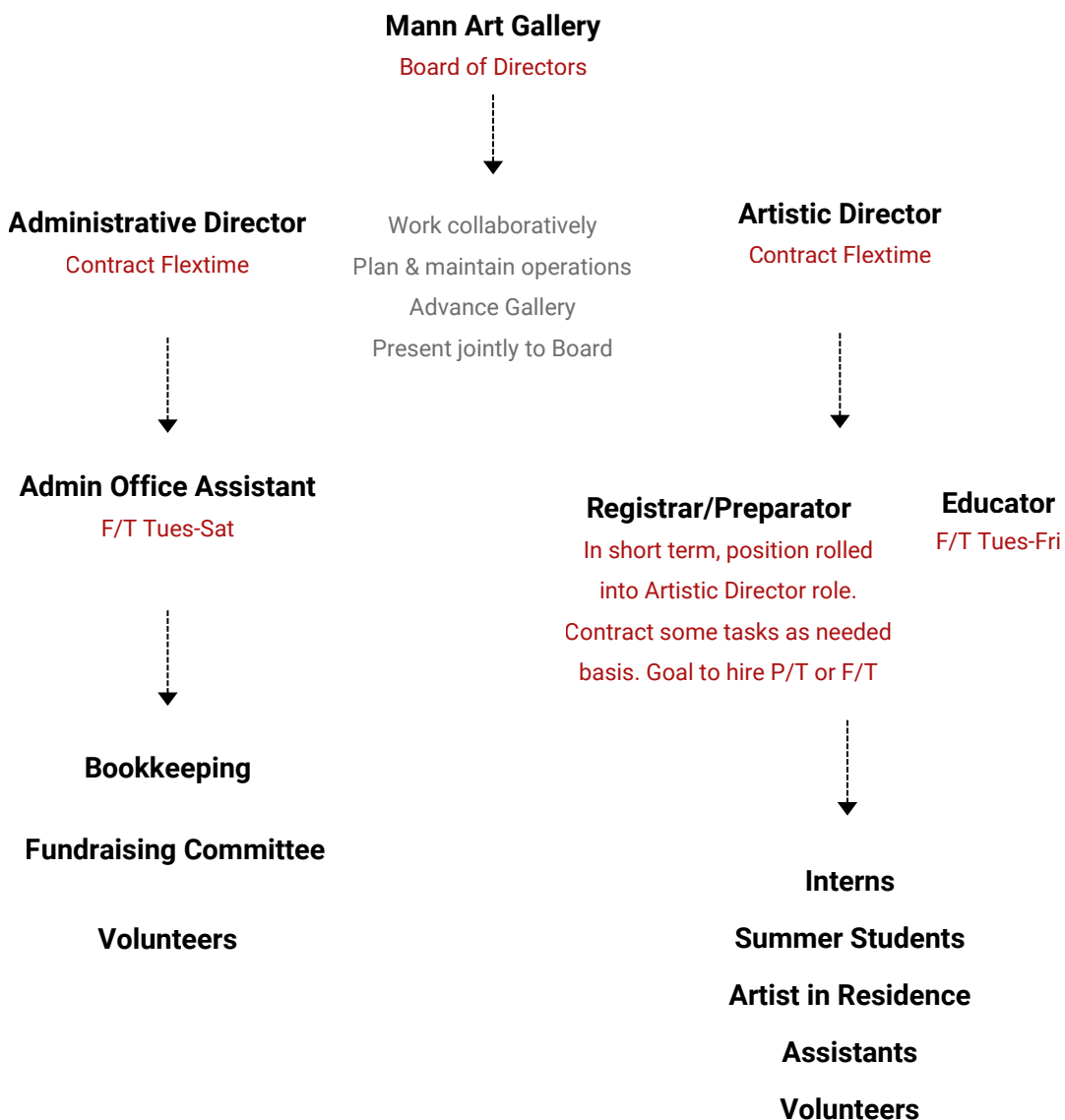
We extend our sincere thanks to our new board members, whose willingness to step forward and contribute meaningfully to the gallery's governance has been both timely and impactful. With their involvement—and the ongoing support of our membership—we continue to grow, evolve, and expand the scope of what we offer to our community. We are proud of what we have accomplished this year and remain optimistic about the path ahead.

Jennifer Brown  
Chair - Mann Art Gallery Board of Directors



# Mann Art Gallery Restructured Organization Model

The Co-Director Model can be beneficial to the knowledge, skills, creativity of both directors and provide professional support in their leadership roles. The board is to observe and to discuss the implementation progress in collaboration with the two Directors and staff. They then will conduct a formal review of the model after 2 years. The directors will be contract flextime positions as we embark on the model with the intention to grow into fulltime jobs.



# Administrative Director's Report

---

2024 has been a year of transition, growth, and renewed energy at the Mann Art Gallery. With the implementation of our new co-leadership model—featuring both an Administrative Director and an Artistic Director—we have found a collaborative approach that plays to the strengths of each role and supports the overall vision of the gallery. This structure has proven to be a productive and collaborative model, allowing each director to focus on their strengths while working toward a shared vision for the gallery. It has brought balance, efficiency, and clarity to the operations and artistic programming of the organization.

As Administrative Director, I have concentrated on improving internal systems, communications, and financial processes. One significant development has been the launch of a monthly Arts Community Newsletter, which has enhanced our connection with members and supporters. This initiative has not only improved transparency but also reinforced our role as a central hub for the visual arts in Prince Albert and beyond.

We also began the process of reorganizing and streamlining our website to ensure it is both functional and user-friendly. A well-structured online presence is essential for increasing accessibility, showcasing our exhibitions and programs, and serving our diverse audiences.

Another major focus this year has been restoring and strengthening our financial management systems. While it has been a challenging journey to bring our financials back to a professional

standard, we have made significant strides. Our progress in this area reflects the hard work and dedication of our staff, board, and advisors.

I want to express my sincere gratitude to the Mann Family for their ongoing encouragement and investment in the gallery, and to our many generous members who are devoted to sustaining and growing the arts in our community. Your support makes everything we do possible.

Overall, this year has laid strong groundwork for operational improvements, deeper community engagement, and a leadership model that fosters collaboration and strategic growth. I'm grateful for the team, the board, and our community of members and artists who continue to support the Mann Art Gallery through change and forward momentum.



Image: 48<sup>th</sup> Annual Winter Festival Art Show & Sale.

Carolyn Carleton  
Administrative Director

# Financial Summary

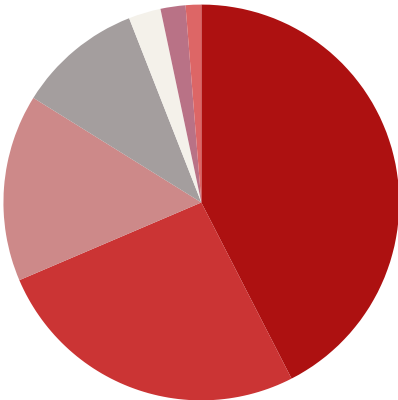
The financial statements were prepared in accordance with Canadian accounting standards for not-for-profit organizations.

65%

The Mann Art Gallery receives a major portion of its operating revenue from grant funding through the City of Prince Albert, SK Arts, and Canada Council for the Arts. In 2024, 65% of total revenue received was from this grant funding.

## Grants

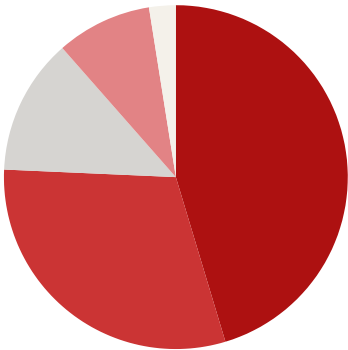
	2023	2024
City of Prince Albert	\$ 100,000	\$ 100,000
SK Arts Board	\$ 60,000	\$ 61,500
Canada Council for the Arts	\$ 36,000	\$ 36,000
Community Initiatives Fund	\$ 20,000	\$ 24,000
Community Grant Program	\$ 6,200	\$ 6,200
SaskCulture	\$ 10,000	\$ 4,800
Multicultural Council of SK	-	\$ 3,000
	\$ 246,262	\$ 235,500



The amounts reported in these financial statements as grant revenue from SK Arts is made up of a combination of lottery and non-lottery funding. This is made possible through the Partnership Agreement between SK Arts and SaskCulture, which is the Trustee for the Culture Section of Sask Lotteries Trust Fund for Sport, Culture and Recreation.

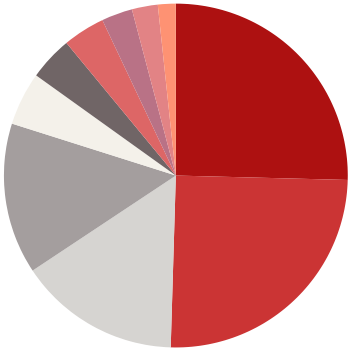
# Fundraising and Donations

	2023	2024
Mann Donations (Operating)	\$ 14,839	\$ 14,936
Mann Donation (Collection)	\$ 10,000	\$ 10,000
Misc. Donations	\$ 3,726	\$ 4,223
Piano Bar Revenue	\$ 7,361	\$ 2,956
HSJAS Sponsorships	-	\$ 825
	\$ 35,926	\$ 32,940



# Self-Generated Revenue

	2023	2024
Winter Festival	\$ 10,509	\$ 8,340
Gift Shop	\$ 7,248	\$ 8,228
Art Rental	\$ 4,947	\$ 4,990
Memberships	\$ 3,300	\$ 4,665
Miscellaneous	\$2,362	\$ 1,647
Tours	\$ 2,138	\$ 1,352
Interest	\$ 1,640	\$ 1,299
Venue Rentals	\$ 961	\$ 955
Art Camps and workshops	\$ 1,629	\$ 800
Bar revenue	\$528	\$ 551
	\$ 35,262	\$ 32,827





## Statement of Operations

Revenues	2022	2023	2024
Grants	\$ 335,593	\$ 246,462	\$ 235,500
Fundraising and Donations	\$ 41,882	\$ 35,926	\$ 32,940
Self- Generated	\$ 28,444	\$ 35,262	\$ 32,827

Expenses	2022	2023	2024
Salaries, Wages and Benefits	\$ 234,593	\$ 216,308	\$ 157,694
Administration	\$ 59,758	\$ 71,490	\$ 52,717
Exhibitions	\$ 49,051	\$ 37,146	\$ 35,003
Education	\$ 45,781	\$ 18,723	\$ 12,344
Permanent Collection	\$ 21,325	\$ 8,757	\$ 10,188
Fundraising	\$ 4,951	\$ 2,489	\$ 1,019

Overview	2022	2023	2024
Total Revenue	\$ 405,916	\$ 317,650	\$ 301,267
Total Expenses	\$ 415,459	\$ 354,913	\$ 268,965

EXCESS/DEFICIENCY OF REVENUES OVER EXPENSES	-\$ 9,543	-\$ 37,263	\$ 32,302
--	-----------	------------	-----------

## Statement of Financial Position

Assets	2022	2023	2024
Cash	\$ 112,197	\$ 51,586.	\$ 108,159
Accounts Receivable	\$ 69,624	\$ 85,517	\$ 13,722
Restricted Trust Funds	\$ 36,949	\$ 48,586	\$ 133,343
Prepaid Expenses	\$ 1,069	\$ 1,792	\$ 3,396
	<b>\$ 219,839</b>	<b>\$ 187,482</b>	<b>\$ 258,621</b>

Liabilities and Net Assets	2022	2023	2024
Accounts Payable	\$ 14,401	\$ 10,616	\$ 14,943
Vacation Payable	-	\$ 3,251	\$ 3,100
Provincial Sales Tax Payable	\$ 803	\$ 1,737	\$ 1,204
Wages Payable	-	\$ 2,082	\$ 1,868
Employee Deductions Payable	\$ 4,334	\$ 6,558	\$ 2,257
Deferred Revenue	\$ 600	\$ 39,341	\$ 79,050
	<b>\$ 20,138</b>	<b>\$ 63,585</b>	<b>\$ 102,422</b>

### NET ASSETS

Unrestricted net assets	162,752	75,311	22,856
Restricted net assets	36,949	48,586	133,343
	<b>199,701</b>	<b>123,897</b>	<b>156,199</b>
	<b>\$ 219,839</b>	<b>\$ 187,482</b>	<b>\$ 258,621</b>

## Statement of Changes in Net Assets

	Unrestricted Net Assets	Restricted Net Assets	2024	2023 <i>Restated</i>
<b>NET ASSETS - BEGINNING OF YEAR</b>				
As previously reported	\$ 133,852	\$ 48,586	\$ 162,438	\$ 199,701
Prior period adjustments	-\$ 38,541	-	-\$ 38,541	-\$ 38,541
As restated	\$ 75,311	\$ 48,586	\$ 123,897	161,160
Excess (deficiency) of revenues over expenses	\$ 21,806	\$ 10,496	\$ 32,302	-\$ 37,263
Interfund transfers	-\$ 74,261	\$ 74,261	-	-
<b>NET ASSETS - END OF YEAR</b>	\$ 22,856	\$ 133,343	\$ 156,199	\$ 123,897

## Statement of Cash Flows

Operating Activities	2023	2024
Accounts receivable	- \$ 15,893	\$ 71,795
Accounts payable	- \$ 3,785	\$ 4,327
Deferred revenue	\$ 200	\$ 39,709
Prepaid expenses	- \$ 723	- \$ 1,604
Provincial sales tax payable	\$ 934	- \$ 533
Wages payable	\$ 2,082	- \$ 214
Vacation payable	\$ 3,251	- \$ 151
Employee deductions payable	\$ 2,224	- \$ 4,301
	<b>- \$ 11,710.00</b>	<b>\$ 109,028.00</b>
Cash flow from (used by) operating activities	-\$48,973	\$ 141,330
Investing Activity (Restricted trust funds)	-\$ 11,637	-\$ 84,757
Increase/decrease in cash flow	-\$ 60,610	\$ 56,573
Cash - beginning of year	\$ 112,196	\$ 51,586
<b>CASH - END OF YEAR</b>	<b>\$ 51,586</b>	<b>\$ 108,159</b>

# Artistic Director's Report

---

2024 was a year of significant transition at the Mann Art Gallery (MAG). With the creation of a co-leadership model, the gallery experienced shifts and growth as it endeavoured to fulfill its Mission to develop, present, and preserve the visual arts for our communities. I am pleased to provide an overview of 2024 curatorial and public programming, designed to promote critical thinking, creativity, and meaningful dialogue through the visual arts.

It is remarkable that the annual Winter Festival Art Show & Sale is coming up to its 5th decade. Each year the exhibition provides surprises and insights, stemming from both the participating artists and the Guest Curator. In the latter, Bevin Bradley's curation and respectful attention to each and every artwork demonstrated the thoughtful care that goes into realizing this exhibition. Likewise, the 13th Annual High School Art Show, curated by Lana Wilson, is testament to the importance of art in the lives of our youth. We greatly appreciate the efforts of art teachers, parents and guardians, and award sponsors who provide opportunities in a professional gallery space for local students.

Ensuing exhibitions featured ambitious installations spanning a range of materials and considerations of space. Heike Fink's *Like A Rolling Stone* was a unique display where visitors had the rare chance to touch art. Her felted fibre rocks, amongst other works, were symbols of nature's resilience and beauty. In the summer, Rob Froese's *Tone Poems* was both elegant and dynamic, and provided new ways of thinking about interdisciplinary exchange between visual art and music. Finally, 2024 finished with *Confluence* by Susan Shantz. Presented in partnership with the Moose Jaw Museum and Art Gallery, Susan's research on water systems and management in western Canada was shared through her installations that emphasized human relationship to the natural world - an apt experience considering our proximity to the North Saskatchewan River.



Image: *Prelude Series*. Permanent Collection artworks. Project Space installation.



While Permanent Collection activities slowed in 2024 due to lack of a registrar, we continued working towards proper storage, maintenance, and display of artworks. Numerous works were selected by exhibiting artist Rob Froese to be shown in conjunction with his solo exhibition, *Tone Poems*. We were also pleased to loan a selection of artworks by Ruth Cuthand to the Mackenzie Art Gallery for their landmark retrospective, *Beads in the Blood/mīgisak mīgohk: A Ruth Cuthand Retrospective*, curated by Felicia Gay. Sharing the Collection is important for research and disseminating knowledge of Prince Albert and area's art histories. None of it would be possible without the generosity of Diane and Roger Mann.

We are grateful for ongoing partnerships with the P.A. Council for the Arts, the Margo Fournier Arts Centre, and the P.A. Arts Board. We also look forward to budding relationships with numerous community groups. These partnerships allow us to share more art widely and support artists, through further exhibitions at the John V. Hicks Gallery (supported by the Arts Council and Arts Centre) and special events, such as Lisa Halsall and Alex Powalinsky's presentation, "Creating Safe(r) Spaces: Building Community and Belonging Through Art," held in December 2024 (supported by the Arts Board and Artists in Communities).



Image: Lana and Gallery Family at Hall of Fame

While expenses rise and arts funding remains stagnant, the commitment from staff, the board of directors, and volunteers becomes more pressing than ever. In particular I would like to note the contributions of Lana Wilson, who marked ten years of education and public programming at the MAG in fall 2024. She was inducted into the P.A. Arts Board Hall of Fame in September - an honour that reflects her dedication to our diverse communities and her belief in the arts.

We also appreciate our funders, sponsors, and membership, who continually recognize the importance of the visual arts in Prince Albert. With the support of everyone connected to the Mann Art Gallery, the visual arts provide a point to gather, share, learn, explore, grow, and be inspired - every day of our lives.

Jesse Campbell  
Interim Artistic Director



Image: Susan Shantz, *Confluence*, installation main gallery, 2024

## 2024 EXHIBITIONS

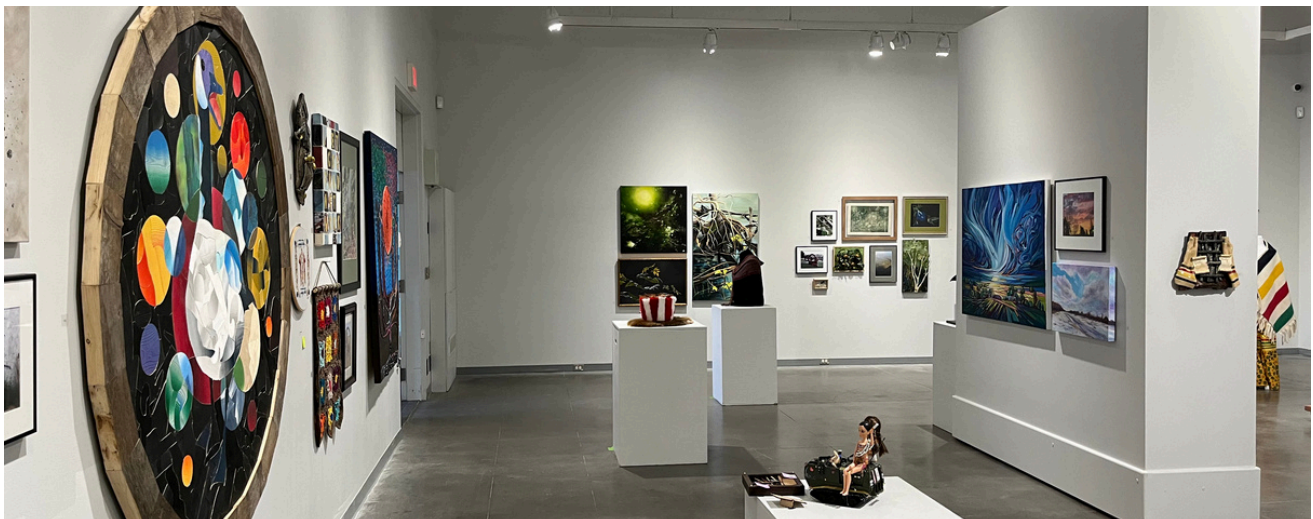


**48th Annual**

# Winter Festival Art Show & Sale

February 9, 2024 — March 22, 2024

Curated by Bevin Bradley



## About the Winter Festival

The Winter Festival Art Show & Sale (WFAS) is the premier community art exhibition in our region, showcasing the talent of over 120 artists from across the province each year. Members of the Mann Art Gallery are invited to submit, exhibit, and sell one artwork, provided they meet the eligibility criteria.

Over the years, the show has expanded significantly, highlighting the impressive artistic production in the visual arts and garnering strong community support through local sponsorships and awards. We extend our gratitude to the artists, art organizations, guilds, and businesses that consistently support this vibrant community exhibition.

## About the Guest Curator

Bevin Bradley; An Assistant Curator at Remail Modern with over twenty years of diverse experience. This includes the not-for-profit sector, co-owning a commercial gallery, and working within the school system. In the not-for-profit sector, she worked with underserved youth, using art as a tool for re-direction. She was the co-owner and co-founder of a successful commercial art gallery. Bevin maintains an active studio practice, including art residencies within the school system. Her founding belief is that art needs to be publicly accessible, and relevant to local, national, and international issues.

# Award Winners

Best in Show / Mayor's Prize sponsored by City of Prince Albert and On the Avenue Artisan's Gallery.

**Winner:** Marcy Friesen (Carrot River), *Come Eat*, mixed media including beadwork and fur

Second Place Prize sponsored by Prince Albert Council for the Arts.

**Winner:** Janaya McCallum (PA), *Bow Down*, acrylic on canvas.

Third Place Prize sponsored by the Prince Albert Arts Board.

**Winner:** Hilary Johnstone (La Ronge), *Morning Swim, Welcoming Sky*, fabric, needlepoint batting, thread.

Guy Rutter Memorial Award / People's Choice Award sponsored by Kyla Art Group

**Winner:** Lorelle Meyer (PA), *Serenity at 7*, acrylic on canvas



## Engagement

# 133

artists and artworks

# 517

Gallery Visitors



# List of Awards

**Art Placement Award for Accomplishments in the Medium of Acrylic** - Shelley McGillivray (Regina), *Cats Cradle*

**Art Placement Award for Accomplishments in the Medium of Oil Paint** - Brennan Cantin (PA), *Borghese Gardens*

**Art Placement Award for Accomplishments in the Medium of Watercolour** - Jerome Mrazek (PA), *Lane View North*

**Art Placement Award for Accomplishments in the Discipline of Drawing** - Ruby Lalonde (Leask), *Cow/Calf Pair*

**Prince Albert Spinners and Weavers Guild Fibre Award**  
Sheila Devine (PA), *Reflections #2*

**KYLA Art Group Award for Landscape**  
Uihyang Kim (Melfort), *One Summer Day*

**Northern Image Photographers Club Award**  
Ryan Arnott (Regina), *Four Tulips in a Glass Vase*

**Northern Image Photographers Club Geoff Payton Memorial Photography Award** - Ken Tickner (Saskatoon), *Green Thumb*

**The Creative Stitches Guild Needlework Award**  
Annette Lanoie (PA), *Fly Little One*

**Lorraine Mathiason Memorial Pottery Award sponsored by the Prince Albert Council for the Arts**

Tabata Bagatim (Saskatoon), *Botanical Guardian*  
Adrian Golban (Saskatoon), *Self Portraiture, Series 2*

**Hue's Art Supply Store Award for Excellent Use of Hue**

Jason Doucette (Saskatoon), *Morning Trumpets - Trumpeter Swans*

**Men Who Paint Award for Expressing Canadian Identity through Landscape Painting**

Lorelle Meyer (PA), *Serenity at 7*

**Frank Sudol Memorial Award sponsored by the PA Woodturners Guild**

Don Schoenfeld (Saskatoon), *Sounding the Alarm*

**Dana Wareing Popescul Memorial Award for Mixed Media**

Elissa Brown (Langham), *Listening to the Spirits*

**Peggy & Sandy Kerr Memorial Award**

Wayne Longjohn (PA), *Be Proud of Who You Are (But Be Careful Where You Do It)*

**John & Marjorie Hicks Memorial Award**

Lana Wilson (PA), *Self-Portrait of the Artist As...*

**Lemon Yellow Art Studio Award for Creative Exploration in Any Medium**

Carmen Bellehumeur (PA), *A Journey of a Thousand Threads*



## 13th Annual High School Juried Art Show

curated by Lana Wilson

April 29 – June 8, 2024

---

### About the High School Juried Art School

Each year the Mann Art Gallery has presented a fantastic variety of art by local high school students. We are delighted to showcase the talents and creativity of these young artists. This year 41 artworks were on display from Carlton Comprehensive High School, Ecole St. Mary High School, Prince Albert Collegiate Institute and Flex Ed School.

### Award Winners

Best in Show: Margarita Tymenko  
Artistic Innovation: Owen Willie  
Creative Expression: Zyrach Macatuno  
Emerging Artist: Siobhan McKinney  
Creative Clay: Adrianriel Tagaro  
Juror's Choice: Alex McLeod  
Artistic Achievement: Isabella Peters  
Barb Lacey Memorial Award: Kain Torgersen & Emily Hrynuik  
Photography Award: Naviah Johnson  
People's Choice Award: Kiara Levesque



## *Like a Rolling Stone - Habitat* | Heike Fink

curated by Lana Wilson

April 16 - July 2, 2024

---

The exhibition is vast, and encompasses many concepts and styles. Central to the show is the very large floor interactive installation of 3000 felted river rocks. Viewers are invited to mingle amongst the stones and interact with them; contemplate nature, lay on them, reconstruct and deconstruct new assemblages.

"Bedrock and rocks are the basis of all land, embody a country's history, and they are a deep connector to the ancient stories of the land and its peoples from First Nations to Metis to Settlers.

Rocks represent flow and connection and I believe the embedded history in a rock is one of the reasons why people connect so deeply with rocks, be they real or felted."

These objects also read beautifully in a formal manner as textured spheres. When asked whether this exposure informed her thoughts & concepts regarding art making. Her response: "I'm seeing my forms in a more abstracted way."





## *Prelude Series*

Permanent Collection artworks selected by Rob Froese in conversation with Artistic Director Rebecca La Marre

---

These artworks are selected by Rob Froese from the Mann Gallery Collection to complement and augment themes that are woven through his own practice. The works on this wall were chosen because they show complementary and playful ways to imagine movement, rhythm and gesture in a work of art. They also resonate with Froese's interest in how the relationship between art and everyday life is different across cultures.

Many of these works are by artists who have made vital contributions to the arts in Saskatchewan, but who have had fewer opportunities to exhibit their work in a gallery setting compared with their peers. This format also allows works with uncertain provenance to be exhibited, when they would otherwise be excluded because of lacking documentation.

Mel Bolen | *Deep Trout*  
Pamela Burrill | *Round Lake Fish*  
Linda Chartier | *Untitled*  
Rigmor Clarke | *Untitled*  
Mina Forsyth | *HH Emma Lake*  
Connie Freedy | *Three*  
Beth Hone | *Folded Sculpture #18*  
Mayawara | *Coolamon*  
Winona Mulcaster | *Muskeg*  
Anita Rocamora | *Untitled*  
Jeff Stewart | *Covered Jar*  
Frank Sudol | *Apple Wood Dish*  
Martin Tagseth | *Chosen Vase #93*  
Andrée Martinson | *Untitled*  
Tim Moore | *Untitled*  
J. S. Base | *Untitled*





## *Tone Poems* | Rob Froese

curated by Rebecca LaMarre  
July 11 - October 18, 2024

---

Rob Froese is an internationally celebrated artist working in ceramics with deep ties to the Treaty 4 area now known as Moose Jaw, Saskatchewan. He grew up surrounded by art, and his love of this place and the land is a current that runs through his practice.

Initially training with the influential potter Jack Sures at the University of Regina in the 1980s, Froese went on to apprentice in ceramics studios in Japan for 15 years. After returning to Canada, Froese began developing the works in this exhibition during a Masters of Fine Arts at the Alberta University of the Arts in 2015.

Drawing on Japanese philosophy and ideas of wabi sabi, his work ranges from functional pottery to sculptural objects, collapsing utility and narrative. Musical, geological and literary influences infuse his work with a sense of composition and movement.

In the studio, Froese embraces erosion and chance. *Tone Poems* features rough marks etched in clay surfaces and layers of glaze that elaborate the artist's process-driven exploration of form, surface, and mark-making. Spanning a variety of clay bodies and forming techniques, Froese has developed site-sensitive installations of objects for use and contemplation that delight the senses. His arrangements of small cups, plates, vase forms and wall works—many shown for the first time in Saskatchewan—invoke notions of musical notation and jazz composition.



## Confluence | Susan Shantz

curated by Jennifer McRorie  
July 11 - October 18, 2024

---

Susan Shantz's art practice is recognized for its immersive, thought provoking and poetic explorations of the connections between humans and nature. Through intense research and a heightened sensibility towards the materiality of her sculptural forms, Shantz creates both visceral and conceptual spaces that investigate nature as a cultural construct, being "suspicious" of and intrigued by "the versions of nature we continuously invent".<sup>i</sup> "Through her art, Shantz illustrates how our culture removes itself from our origins in nature, in spite of the fact that nature is the source of both our sustenance and well-being.

Through the interplay of the exhibition's various installations and works, Shantz invites us to consider our own sense of intimacy with place, how we come to embody place by taking into our own bodies the water sourced from Saskatchewan's rivers and lakes. Confluence encourages viewers to consider the interconnectedness and fragility of our water sources, the environmental impacts of human progress on our water systems and how these impacts will ultimately affect us all.

Jennifer McRorie, Curator

We gratefully acknowledge our funders, including Canada Council for the Arts, SK Arts, SaskCulture, Saskatchewan Lotteries, the City of Moose Jaw, the City of Prince Albert.



## Exhibitions

---

### About the John V. Hicks Gallery

In late 2014, the Mann Art Gallery began a partnership with the Prince Albert Council for the Arts to oversee programming at the John V. Hicks Gallery, located on the second floor of the Prince Albert Arts Centre. The Hicks Gallery rotates a combination of work by local artists, guilds and organizations and shows toured by the Organization of Saskatchewan Arts Councils (OSAC).

Programming at the Hicks Gallery is possible thanks to support from the City of Prince Albert, SaskCulture and Saskatchewan Lotteries. The Mann programmed the following exhibitions in 2024.

Illuminating Moments: A Collection

Brennan Cantin

Curated by Lana Wilson

Drawn From Words | George Glenn

Curated by Jesse Campbell

Northern Image Photographers Annual  
Exhibition

Curated by Emma Anderson

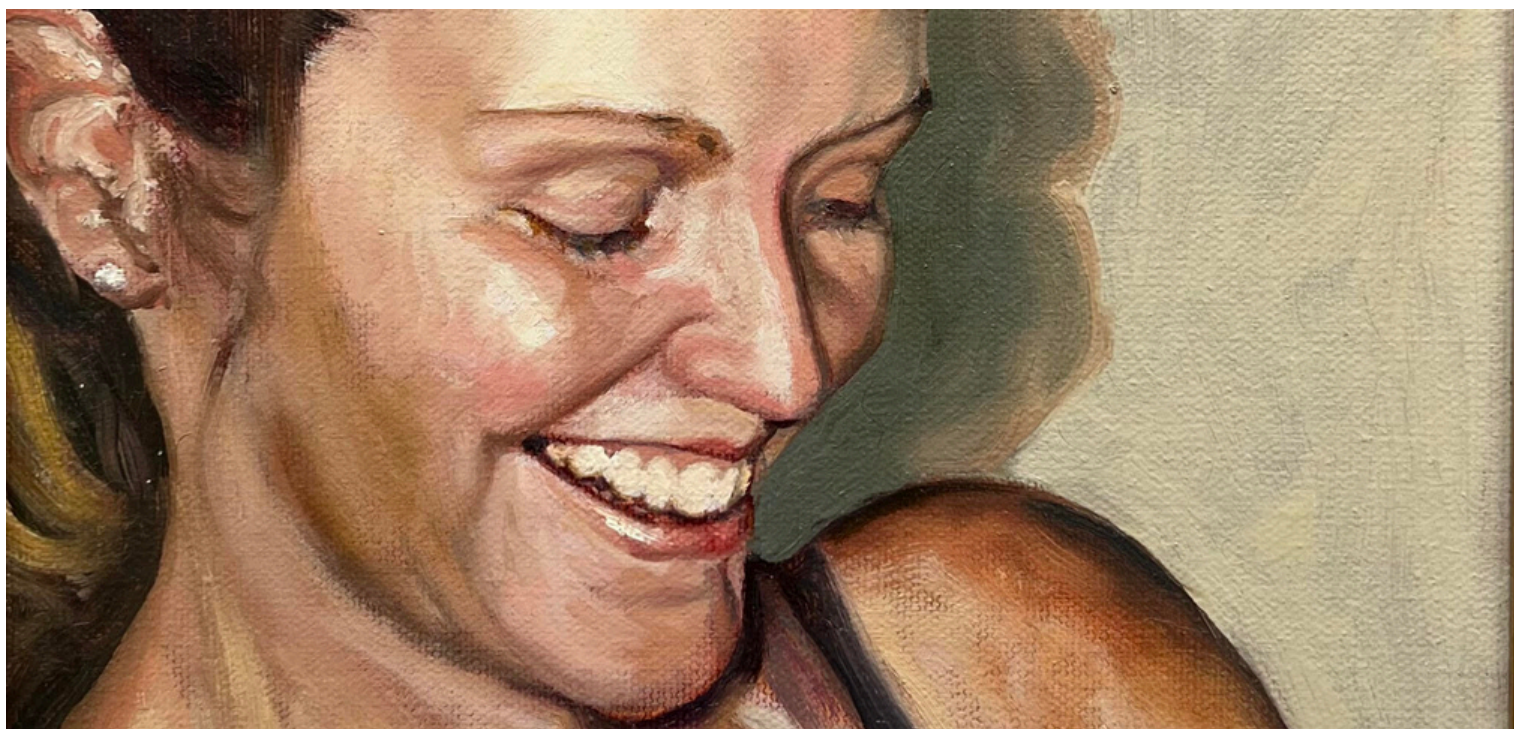
Studio 1010 Annual Exhibition

Curated by Emma Anderson

**1068**

Gallery Visitors





**Brennan Cantin**

## **ILLUMINATING MOMENTS: A COLLECTION**

**curated by Lana Wilson**

March 1 – 23, 2024

**123**

Gallery  
Visitors

Brennan's fascination with colour informed the exhibition's arrangement, as well as the informal placement of works we often see in our homes when our collection exceeds our wall space. Colour groupings demonstrate his passion and sensitivity in mixing and blending hues, offering comparisons across time, technique, and subject.

Old family photos form the basis for most of his portraits. Brennan describes searching through albums, recalling family vacations and reflecting on photos of his parents as children and young adults. He tells [us] how he paints "what's at hand." These photo albums offer familiar subjects in candid moments, rich for creative interpretation and technical challenge.

Brennan's ability is the result of talent supported by passion, hard work, and constant practice over his 18 years of life. This collection demonstrates his dedication to continual development and flexible attitude towards trying new things while engaging with the familiar, mundane, and cherished.



JOHN V.  
**HICKS GALLERY**  
ARTS CENTRE | SECOND FLOOR

**George Glenn**

## **DRAWN FROM WORDS**

**curated by Jesse Campbell**

April 1 – May 31, 2024

**171**

Gallery  
Visitors

2024 marks the 25th anniversary of John V. Hicks' passing. This exhibition displays a series of drawings that John's good friend, George Glenn, created for the covers of his poetry volumes. Displayed together, George's drawings and John's poems show the richness of interdisciplinary exchange, drawn from the experiences that they had of one another's work.

*Drawn from Words* invites visitors to embark on a journey through the symbiotic relationship between word and image, as exemplified by the bond shared between Hicks and Glenn. Their collaborative efforts illuminate the transformative power of interdisciplinary exchange, drawing inspiration from the profound impact of their mutual admiration and respect for each other's work.



JOHN V.  
**HICKS GALLERY**  
ARTS CENTRE | SECOND FLOOR

# NORTHERN IMAGE PHOTOGRAPHERS ANNUAL EXHIBITION

curated by Emma Anderson

September 1 - 23, 2024

96

Gallery  
Visitors

The Northern Image Photographers Club is pleased to present its annual exhibition. This show comprises photographs submitted by club members and provides them with an opportunity to share their work with others.

This year's exhibition is guest curated by Emma Anderson. Being attentive to the subject matter and use of formal elements such as colour, texture, pattern, and composition in the photos, Emma has created a display that shows connections amongst the works while highlighting the unique viewpoints of each photographer. The Club also assigned Emma the task of designating one piece as "Best in Show." The award is made in memory of Geoff Payton, one of the founding members and former president of the Club, to highlight his approach of creating an excellent photograph without digital manipulation.





 JOHN V.  
**HICKS GALLERY**  
ARTS CENTRE | SECOND FLOOR

## STUDIO 1010 ANNUAL EXHIBITION

curated by Emma Anderson

October 1 - 23, 2024

Studio 1010 is a group of artists that meet every Monday afternoon to create artworks at the Margo Fournier Arts Centre. The name of the group comes from the address of the Arts Centre, 1010 Central Avenue.

At the weekly gatherings, each artist works on their individual projects in a friendly and encouraging atmosphere. Ideas and approaches are shared to support one another in exploring new creative paths.

**119**

Gallery  
Visitors





Image: Leah Dorion Horse Labyrinth outdoor art installation, 2024

## 2024 Education Program



# Educators Report

The Mann Art Gallery's Education Program is an essential part of our mission to bridge our communities and the visual arts. It takes place throughout the year, encourages art making using quality tools and materials, and provides the majority of activities with heavily subsidized fees to reduce access barriers for schools and community members.

The Education Program successfully delivered 37 programs which engaged over 1,031 participants of all ages and abilities in 2024.

Lana Wilson returned to the Manager, Education Programs role in April after a term as Acting Director/Curator from October 2023 – March 2024.

Once again, the Education Program would not exist without significant funding from the Community Initiatives Fund, City of Prince Albert, and the Saskatchewan Lotteries Prince Albert and Area Community Grant Program.



Image: Family Art Day, 2024

2024 Activities were delivered in the following categories:

- Gallery Tours with accompanying art activity for school and community groups
- Professional Development
- Guest Artist Talks and Workshops
- In-House Activities including Free Art Days and Culture Days activities
- Children's Art Camps
- Outreach/Offsite with community Groups and seniors in personal care homes
- Community Art Exhibitions - the Annual High School Juried Art Show (63 artists)
- Artist Residency Project - The Metis Horse Labyrinth

Guest Artist activities: annual Curator's Walk-through with Bevin Bradley during Winter Festival, felting workshop with Heike Fink, artist talk with Rob Froese, and the sound bath with Sandhi Irvine in Susan Shantz's "Confluence" installation.

We delivered the Intergenerational Art Program during three visits to Parkland Integrated Health Centre in Shellbrook, where 23 Grade 4/5 students partnered with 15 senior residents to create art together.

Thanks to SaskCulture, we were able to deliver another Intergenerational Metis Mentorship Project. Lead artists Leah Dorion and Elder Curtis Breton mentored Ashley Smith and Louis Lafferty as they created a temporary, 10-metre wide outdoor labyrinth made of wooden stakes, willow boughs, and stones at the Prince Albert Tourism Centre. The installation lasted for 50 days throughout September and early October.

Surveys conducted after education programs indicated that, of a total of 53 respondents, 89% rated the activity they attended as Excellent (5/5). The top three reasons for participating in the activity were: 1) To visit an art gallery, 2) to learn something new, including new art skills, and 3) to see the current exhibitions.

Comments included:

The Labyrinth: "It's so great to engage the school community for student experience and to meet curriculum outcomes."

Culture Days Free Art Day: "We loved it! Learned new pottery/clay skills, made beautiful art & also met and made new friends. Loved the demonstrations and all the help. Thanks so much!"

Drop-In Art Day: "[The Staff] really set the table for an amazing learning environment. I loved that the gallery exhibition was related to the activity. We and our kids were very engaged. Thanks for the warm reception to the gallery."

Impact:

Groups who requested programs included elementary, high, and post-secondary schools from PA and surrounding area (eg. First Nations University, SUNTEP, Gabriel Dumont Institute), Girl Guides, YWCA, Metis Addictions Council of Saskatchewan, and members of the Mann Art Gallery. Partnerships this year included Tourism Prince Albert and the City of Prince Albert, Saskatchewan Senior Fitness Association, Parkland Integrated Health Centre, Prince Albert Artists in Communities, and the Prince Albert Council for the Arts

Drop-In Art Day: "[The Staff] really set the table for an amazing learning environment. I loved that the gallery exhibition was related to the activity. We and our kids were very engaged. Thanks for the warm reception to the gallery."



Image: Lana at Arts Hall of Fame 2024 Credit: P.A. Arts Board

Recognition

Lana Wilson was recognized for two awards this year for her educational and leadership roles at the Mann. She was a SK Arts Recognized Artist, as was Jesse Campbell, and an inductee into the Prince Albert Arts Hall of Fame as a Builder (nominated by Jesse). "It's just a pleasure to help people encounter artworks, to have a chance to meet artists. I'm so incredibly lucky." (Prince Albert Daily Herald, Sep. 24, 2024).

Thank you to everyone who supported and participated in our programming this year.

Lana Wilson  
Manager, Education Programs

# Education Programs

## Gallery Tour Program

12

Tours

140

Participants

	Activities	Total Participants
Gallery Tours	12	140
Professional Development	2	44
General Gallery Programs (In-House)	8	326
Children’s Art Camps	1	2
Outreach	4	138
Community Art Exhibition: High School Juried Art Show	2	180
Artist Residency	3	95

## Outreach

1,031

Participants

# Education Participant Stats

Participant Categories	Participants
Artists	9
Community Group	74
Adults with Disabilities	11
Youth with Disabilities	26
General Public	196
Children 7-12(Art Camps)	2
Families	341
Indigenous	15
Intergenerational	127
Seniors	61
Seniors (In care homes)	59
Students: Pre-K - Gr. 5	75
Students: Gr. 6-12	118
Students: Post-secondary	40

Participant Age Categories	Participants
All Ages	273
Families with young Children	158
Children 0-5	53
Children 6-11	212
Teens 12-16	6
Youth 15-17	112
Children & Seniors Group	127
Adults	408
Seniors	139

# 37

Total Activities

# 1031

Total Participants





# Engagement

---

# 2,778

Gallery Visitors

---

# 1,949

Special Events (Receptions & Fundraisers)

---

# 4,787

Grand Total In-person Engagements

---

## Gallery Members and Volunteers

# 184

Gallery Members

# 20

Volunteers



Image: Rob Froese Artist Talk at exhibition of *Tone Poems*

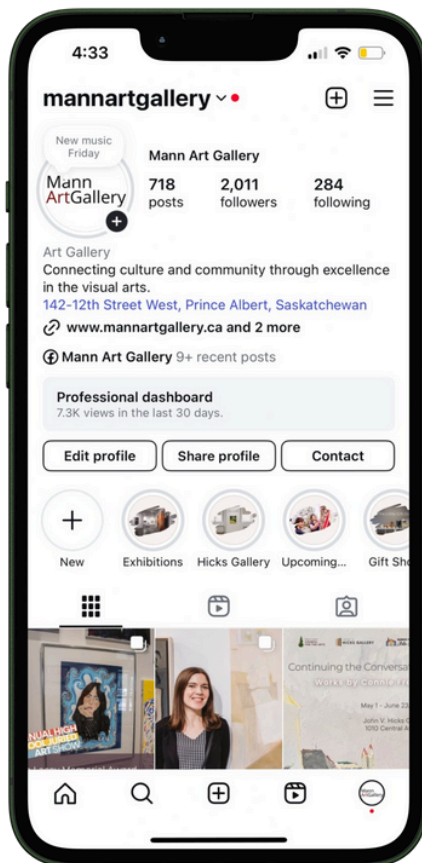
### VOLUNTEERS

The Mann Art Gallery relies on the crucial support of volunteers to fulfill its Mission. Many thanks to the individuals who assisted with all public events, programs, receptions. And to everyone who worked so hard to provide music, food, cocktails, event coordination, and more at the new Art + Sound Piano Bar fundraisers.

# Online Engagement

## Social Media

---



### Facebook

**51.4K**

Reach

**4.5K**

Content Interactions

**2.1K**

Followers

**98.5K**

Views

### Instagram

**12.2K**

Reach

**125**

Follows

**2K**

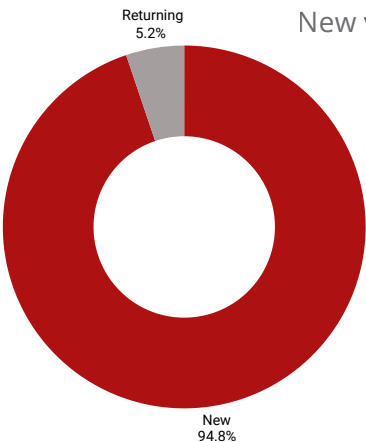
Followers

**19.4K**

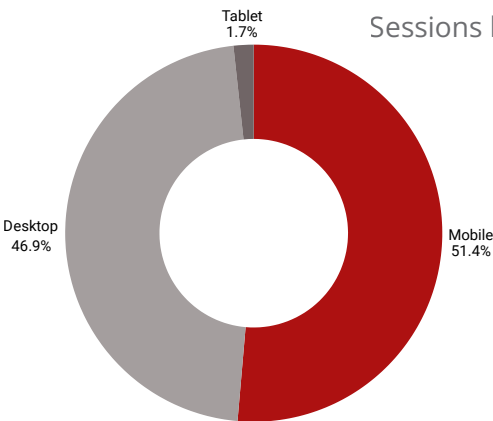
Views

# Website Overview

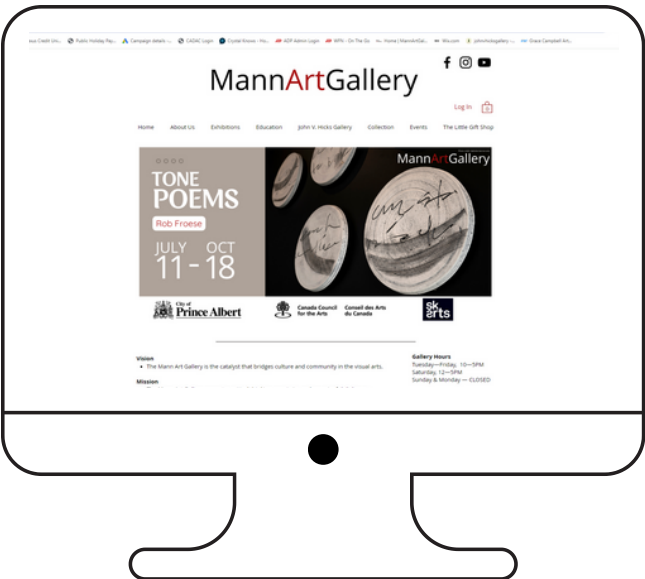
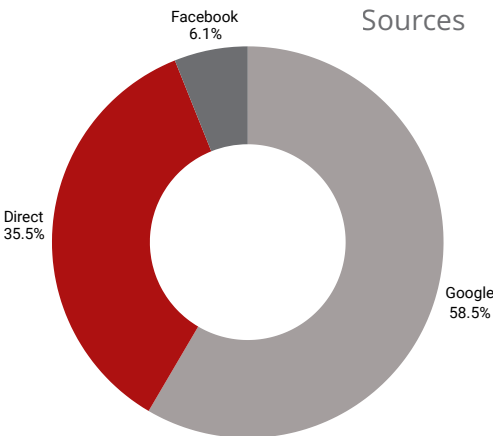
New vs. returning visitors



Sessions by device



Sources



**10.5K**  
Site Sessions

**6.9K**  
Unique Visitors

# FUNDRAISING: Art + Sound

## Piano Bars

Gallery Board Members and volunteers initiated the Art & Sound piano bar fundraisers, under the direction of board member Kim Orynik. There was one event held in 2024, where guests enjoyed music, trivia, signature cocktails and a thoughtful menu of appetizers.

---

# \$2,956

Raised by Piano Bars (Net)

## Musicians

Thank you to all of our talented musicians, without whom these events could not exist.

Brenner Holash

## Sponsors

Lakeland Ford

Mr. Mike's Steakhouse

Ricky's All Day Grill

Boston Pizza

---

Image: Piano Bar, Dec. 12, 2025.





## Cultural Funders



Canadian  
Heritage

Patrimoine  
canadien



Canada Council  
for the Arts

Conseil des Arts  
du Canada



Community  
Initiatives Fund

## Partners



## Media Sponsors



# Mann ArtGallery

---

**Contact us:**



306 763 7080



142-12th Street West, Prince  
Albert, SK, Canada



reception@mannartgallery.ca  
mannartgallery.ca